

This quilt was designed to commemorate the  
Quasiquicentennial of the City of Brandon, MN.

1881 - 2006



# Quasquicentennial Historical Quilt

## Brandon, Minnesota

1881 - 2006



Janet Nelson, Rita Plaster & Marlene Lund



## Design & Sewing An Original, One-of-a-kind, Historical Quilt



Marlene Lund, Janet Nelson, Carole Severson & Chris Korkowski spent one full morning at St. Ann's Church basement sorting through hundreds of pictures, of which 40 were chosen to be used on the quilt.



The entire quilt top was designed and constructed by Marlene Lund. This took her approximately 50 hours.

The research, computer design and printing of the pictures, was done by Chris Korkowski.



The quilt was set up on a frame and hand stitched at Grace Church. Hand stitchers were: Marlene Lund, Rita Plaster, Delores Nelson, Lois Backlund, Babe Jacobson, Chris Korkowski, Betty Ledermann, Hulda Rossum, Nancy Gulbranson, Arlene Hall and Janet Nelson. It took 48 hours of hand stitching to complete.



Marlene Lund

Jeanette McGillecuddy

Chris Korkowski

Jeanette ( Mahan ) McGillecuddy was the winner of the quilt.



## BRANDON, MN

The Brandon Auditorium and Fire Hall is located at 105 Holmes Avenue and was built by the WPA at a cost of \$67,150.00. It was designed by Minneapolis architect F. Boes Pfeifer and contains some wonderful WPA art and still retains some of its original lights. The building is faced entirely in local fieldstone and concrete and has an unusual asymmetrical design. It is obvious that the workers carefully chose whole and cut stones for their varying colors, texture and size. Even more decorative patterning is visible on the south and main facades.

Construction began in 1934 and was completed in 1936 when a Grand Opening was held with an attendance of over 5000 people. The structure was built to replace a wood frame village hall that had been constructed on the same site in 1890. Clarence Newhouse, City Clerk, was the local administrator and Gust Anderson was the building superintendent.

The building was placed on the National Register of Historic Places in 1984.



### **Chippewa Lutheran Church**

The Chippewa congregation was started in 1871. Because the railroad had not yet been built, there was some concerns as to the right location for their building project. In 1885 the church was built at 6655 County Road 7 NW, it's present location. In the early 1960's they moved the church's main door from the front of the building, to the east side, adding a new entrance. In the late 1970's a church office was added.



### **Grace Lutheran Church**

The Norwegian Synod congregation held religious services in Brandon School District 31 from 1881 to 1898, when the school building was purchased from the village. The first church was built in 1904, later known as Grace Lutheran Church, which was dedicated in 1910. A new church was built in 1958 at the same location of 205 Central Avenue in Brandon. A massive remodeling and addition was completed in 2002 and dedicated in 2003.



### **St. Ann's Catholic Church**

This first Catholic church was built in 1902 to serve 23 Catholic families. The wood frame building was constructed at a cost of \$2,759.90. Before that time, the Catholics of this area attended services in Millerville. In 1966 a new church and parish house were built across the street from the first church and are located at 402 Nelson Avenue North in Brandon. The bell from the original church still stands on the church's original site.

### **Brandon State Bank**

O.F. Olson was the first President and Theodore F. Olson was the cashier when the bank was organized in 1902. In 1916 this institution was converted into the First National Bank of Brandon with Tolief Jacobsen as the president and Ferd Swenson the cashier. The bank closed in the 1920's. Over the years the building has served many other businesses and was destroyed by fire in 2001. This bank was located at 103 Central Avenue North, presently the car lot at Knotty Pine Station.



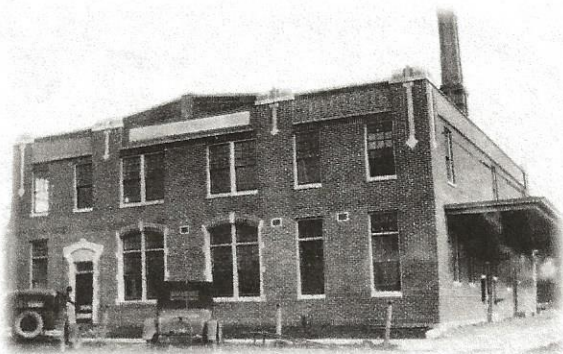
### **Brandon Creamery ca. 1900**

The first creamery was located at 409 East Front Street . The members of the first creamery board were L. Sektnan, President; Emil Bergh, Secretary, John Halgrimson, Treasurer; Gustavis Guenther, Ole Bergh, Ludvig Hanson, and Carl Augdahl, Directors. (Note: the creamery was located where the Honey Tree Antiques Shop is located in 2006. Part of the original building is still in use.)



### **Brandon Creamery 1929**

The creamery was relocated to 102 2nd Street in October 1929 when the brick building was built. It closed in 1970 and the members of the Creamery Board at that time were: Clifford Lund, Clifford Johnson, Delphin Engel, Norman Severson, Eldred Lund and Donald Johnson. Ralph Toft was the manager, Ted Haabala the butter maker and Evangeline Erickson the Bookkeeper. In 1973 the building was sold and renovated into 10 apartments.



## The Diner



The Diner

The Great Northern Observation car was purchased by Jake and Hortulana Goering in 1935 and placed about a half block from the Highway 52 (now CR82) and County Road 7 intersection, 201 Central Avenue South. There was an addition of a house in 1944. In later years the train car was removed and a front section was added to the house. It then became known as the Starlite Bar & Grill. In 1989 the building was torn down.



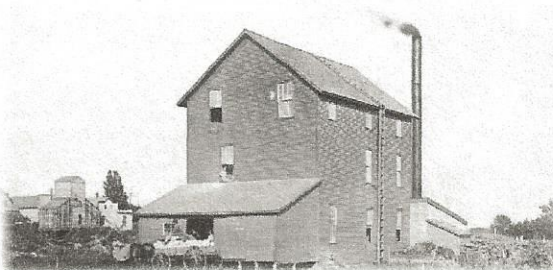
## John Hammergren Dray Line 1907

John had a blade on his rig in order to grade the dirt streets. He was the dray man who hauled freight and milk, to and from the Great Northern Depot. John cut ice in the winter and stored it in saw dust in two ice houses in Brandon. He hauled ice to the residents of the city three times a week.



## Metcalf Feed Mill

The Brandon Feed Mill was run by Mr. Metcalf until the early 1920's. It was located where the Brethorst Excavating business is located at 101A County Road 82. In the picture's background an elevator is being constructed. When the feed mill was torn down the lumber from it went into the construction of two homes in Brandon, the Scott & Michelle Schaefer home at 202 2nd Street West, which is still in use and the Henry Christenson house at 220 Central Avenue South, which has since been removed.

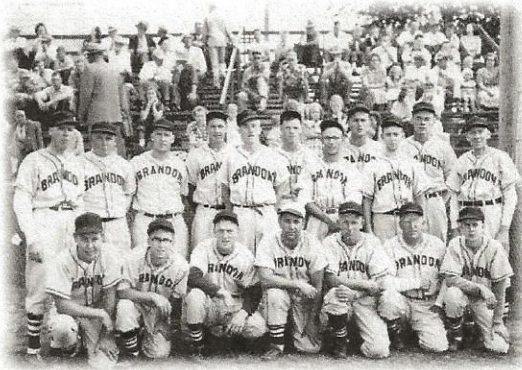




## 1951 Resorter's League Champs

Front Row: Charles Erickson, Robert Lanners, Ray Johnson, Claud Harnett, Orvin Schjei, Clarence Anderson, Robert Olson.

Back Row: Leroy Wallin, Clarence Lehn, Cortland Scherrer, Dick Johnson, Curtis Olson, Dale Walstad, Elphege Webskowski, Les Anderson, Eugene Stene, Wayne Bye and Oscar Pladson.



## Officers Of The First

### Brandon Fire Department 1890

Back Row: Berndt Tronbol, Jacob Tamble, Prosper Seidlinger

Front Row: Dr. Van Cappelan and O.F. Olson

### Chiefs

1889-1902 Jacob Tamble

1974-1977 Jerry Klein

1903-1904 A.H. Hanson

1978-1979 Dan Rusch

1905-1909 Jacob Tamble

1980 Jerry Klein

1910 B.T. Teigen

1981-1982 Dave Thompson

1911-1913 Jacob Tamble

1983-1989 Frank McFarlane

1914 John Hammergren

1990-1991 Lynn Thompson

1915-1929 Joseph Tamble

1992-1994 Tim Grabow

1930-1954 Albert Holmgren

1995-1997 Ernie Schmitt

1955-1961 Oscar Pladson

1998-2000 Jerry Challes

1962-1966 Ray Lanners

2001 Jerry Bitzan

1967 Ralph Ostlund

2002-2003 Bill Koetter

1968-1970 Winston Johnson

2004-2006 Richard Korkowski

1971-1973 Frank McFarlane

## Brandon Lions Club

### Charter Members 1969

Back Row: Nick Bresson, Otto Wienrich, Eugene Griffen, Duane Johnson, J.O. Renkes, Les Anderson

Front Row: Ralph Ziegleman, Rueben Myhr, Rev. Fred Bromhall, Myron Severson, Don Bakken

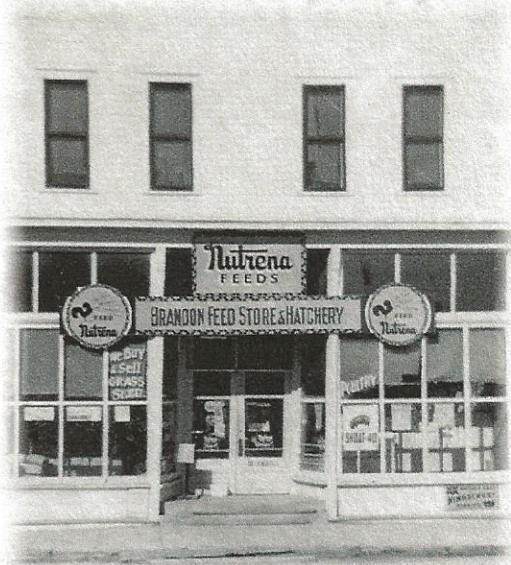


### Hoplin-Nelson Funeral Coach



The 1911 Sayer & Scoville horse drawn funeral coach used by Ole Hoplin from 1919 - 1925. The hearse has six windows and eight pillars. In the winter it was adapted by removing the wheels and using runners. This coach rests in the Pope County Historical Museum in Glenwood, MN. and may be seen at anytime.

### Brandon Feed Store & Hatchery



The Brandon Feed Store & Hatchery was purchased by J.O. Renkes in 1920 and operated for 57 years. It was located at 109 Central Avenue North. The building was taken down in 1986. "J.O." was commonly known as the "CornCracker", and he wrote a column for the local newspaper under that name.

### John Korkowski Implement



The John Korkowski Implement business was in operation from 1928 until 1980. Over this time John became known far and wide for his sales and professional service. The shop was also a meeting place for farmers during the off-season, as they gathered around the pot bellied stove to play cards and solve the world's problems. In 2006, Douglas County Repair occupies this building at 203 2nd Street East.

### **Unknown Farmer**



dragging his field with a team of three horses near Brandon in 1911.

### **O.F. Olson**

O.F. Olson was one of the most prominent men in the history of Brandon Township. He came to America in 1867, and homesteaded in Solem Township before moving to Brandon in 1879, the same year the railroad reached that area. It was in the Brandon area where he began to accrue significant wealth.

He built the Olson Hardware and Implement Company and was instrumental in organizing the Implement Dealers Insurance Company, Brandon State Bank, Farmers & Merchants Union Elevator Company and the Farmers Cooperative Creamery. O.F. Olson also bought, sold and shipped livestock and became a realtor for village and rural property. He eventually owned 1800 acres of farmland in Douglas County.



### **First Brandon School District 31**

This school was built in 1880 at 209 Central Avenue South and used for grades 1 through 8. It also was used by the Norwegian Synod Church for religious serves on the week-ends from 1881 until 1898, when it was purchased by the Synod. After 1904, it was sold again and used as a blacksmith shop until it was modified into the home of Jacob and Hortulana Goering. The house later was sold to the Mark and Anita Roers family. It burned to the ground in 1996.



### **New Brandon School District 31**

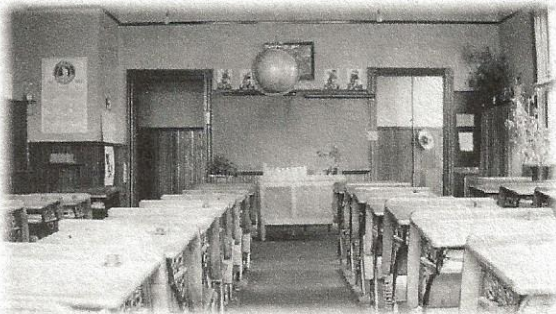
The school building at 206 3rd Street West, was built in 1902 on land donated by O.F. Olson. The original construction cost was \$3,885.00. An addition was built in 1924 and 1957. In the 50's District 31 became Brandon Consolidated Schools 207. The original building and the 1924 addition were torn down in 1969 and on April 5, 1970 a new school was celebrated with an "open house". More classrooms were added in 1980.



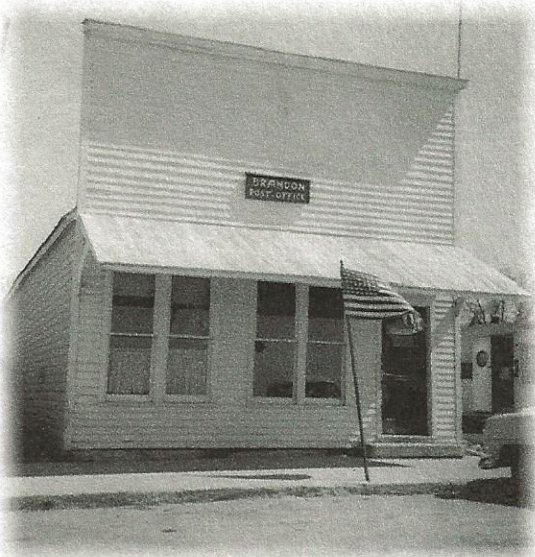
### **Brandon School District 31**

#### **Fifth & Sixth Grade Classroom**

This room was located upstairs on the front right side of the new District 31 building and was the class room nearest the Superintendent's office. There were four rows of desks and each desk had an inkwell hole. The cloakroom ran the width of the room, had a door to the hallway, a window on the outside wall and was behind the teacher's desk. The globe of the world hung from the ceiling in front of the students.



## Brandon Post Office



The original post office was located at 207 Front Street. All the mail in and out of Brandon was handled by the railroad. The mail was transported two and one-half city blocks, between the depot and the post office, by a hand pushed cart. A new post office was built in 1959 at 101 Front Street and opened for business on September 17th that year. A dedication ceremony was held the following spring on April 22, 1960.

## Original Brandon Postoffice Interior

**Emily M. Seidlinger Drexler, Postmaster**



This picture of the inside of the post office may have been taken during World War II. Notice the Defense Window. This post office was located at 208 Front Street. Before becoming Brandon's Postmistress, Emily Seidlinger Drexler had been a teacher in Brandon's first District 31. She held the job of Postmaster for 37 years before retiring in 1951 and moving to Blue Earth MN.

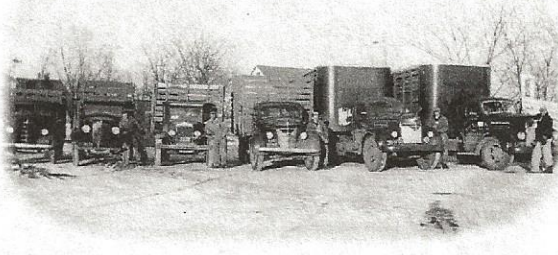
## Charlie Schelin Store



Schelin's first store, located a block west burned down in 1942. He then moved his business to the new location at 207 East Front Street, to a building owned by Martha Hagedorn. In this 1959 photo Charlie is seen with clerk Carol Rossum. Charlie, who was in the grocery business for over fifty years, would keep the store open many evenings so that the young people of the community could have a gathering place.

## Roy Strom Trucking Fleet

In 1932, Roy started his trucking business, at age 20. By 1958 his fleet had grown to ten trucks. For 36 years, Roy primarily hauled livestock to St. Paul and back-hauled freight to the Brandon area. Truck drivers for Roy were: Cliff Augdahl, Tony Skrove, Ray Stich, Dorland Ranstead, Kenneth Schjei, Dayton and Les Hermanson, Vernon and Cliff Strom, Ralph Angen, Dean Christopherson, Ervin Grubb and Jerry Klein. In 1968 Roy sold his business to Kenneth Schjei.



## School Bus And Students in the 1940's

Back Row: Michael Webb, Arnold Albertson, Irene Julseth, Mildred Dorsch, Shirley Wahlin

Third Row: Shirley Webb, Mary Lee Bennett, Lavonne Bennett, Delores Wahlin, Pauline VanSickle

Second Row: Eldred Lund, Pat Webb, Betty Bennett, Ruth VanSickle, \_\_\_\_\_ Arvid Albertson, Clarence Lehn, Bobbie Bennett

Front Row: Clarice VanSickle, Rosemary Lund, Dennis Lund, \_\_\_\_\_ Karen Ann Therkildsen, Charles Webb, Jeanette VanSickle, Allan Therkildsen \_\_\_\_\_



## Ruppelius General Merchandise

This store was located at 101 Front Street E., the 2006 location of the Brandon Post Office. In 1912 the business was sold to Holmgren & Christenson.

Holmgren retired in 1938 so Elda & Roy Christenson bought his interest in the business. The store then became Christenson's Store and was in operation until 1945 when word came that Roy died in Kunming, China in World War II. Henry Christenson locked the doors of the store and never opened for business again.





Front Street  
1917  
Looking West



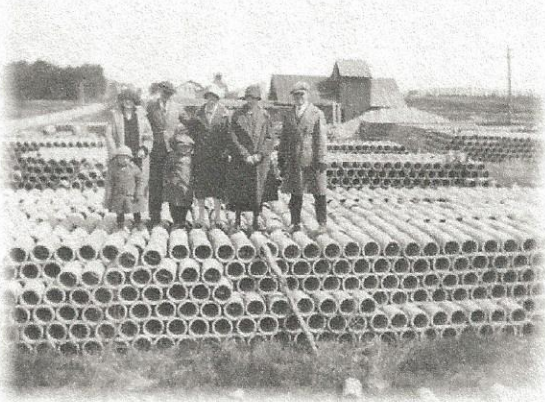
Front Street  
1910  
Looking East



Front Street  
Early 1920's  
Looking Southeast

### **Brandon Tile Manufacturing Co.**

The tile factory was owned and operated by Oscar Newhouse from 1914 - 1945. It was located at 206 West Front Street. It was a center of attraction in town and everyone wanted to have their picture taken with the tiles. Between 4,000 and 6,000 concrete drain tile could be turned out each day. The cement used was brought in by rail and the sand came from the gravel pit at nearby Moon Lake. Some winters, if the sleighing was good, they would haul about 300 loads of sand by horse and sleigh, for use in the spring.



### **Cafe since 1898**

This is one of the original buildings of the town located at 107 Central Avenue North. The cafe, with residence above, was built in 1898 by O.L Stenberg. At one time this was a popular beer joint and pool hall. Over the years, there have been over two dozen owners of this property and several renters.

Some of the establishment names were:

George Videen Restaurant, Stariha's Cafe, Sportsman Cafe, Madsen's Cafe, Milt's Cafe, Phil's Cafe, Curt's Cafe, Morin's Cafe, Fish's Cafe, Blue Gill Inn, Mom's Pizza & Cafe, Fischers' Cafe and the RanDen Cafe, owned by Randy and Dennis Hulkonen in 2006.





### Wilbur's Barber Shop

Wilbur Hopfner bought the barber shop , located at 109 Front Street, from George Ziegleman in 1946. Wilbur had just returned home from World War II, as an army barber. Wilbur is pictured cutting hair for Clint Moe, who had a coffee shop next door to the Barber Shop. He served the community for 48 years until in 1994, when he sold the shop to Jim Aughdahl. Wilbur also entertained many folks over the years with his saxophone, playing in several dance bands.



### Brandon's First School Bus 1942

Henry Handke drove an early school bus transporting students to and from the Brandon School. An excellent mechanic, he had a vehicle repair shop for many years at the site of the present bus barn on Second and Central Avenue. Henry served as Mayor of Brandon from 1940 through 1950 and also was a councilman.



### Going to "read for the minister"

Clifford Strom, at age 13, began to read for his minister in preparation for Confirmation. Once each week Cliff drove Blanch, pulling a jogging cart, three miles to class. His cart had wheels in the summer and skis in the winter. Pastor John A. Peterson was the minister at Chippewa Church who helped Cliff prepare. Cliff was confirmed in the spring of 1930 at age 14.



## View From The Top Of The Elevator In 1935

Looking to the south, you can see County Rd 7, long before there was an Interstate Highway 94. Chippewa Church, Franks Standard Station, The Diner and the Jake & Hortulana Goering home can also be seen. The barn in the distance is the 2006 location of the Wayne Lund residence.



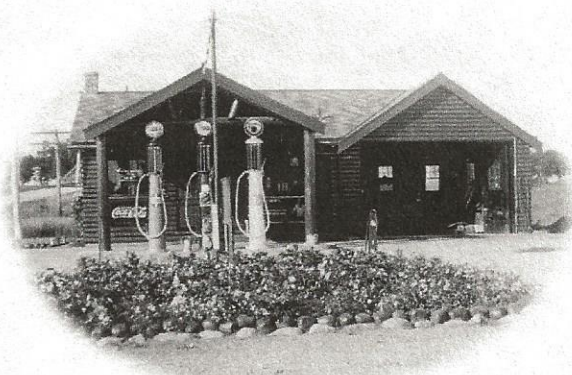
## Frank's Standard Station in the 50's

The original station, located at the intersection of US Highway 52 and County Rd 7, was built by Jake Goering in the 1920's. Frank Goering took over the business when he returned home from WW II. Frank remodeled and enlarged the station several times. This station was the Greyhound Bus Depot from the 1920's until the middle of the 1970's. Frank served the community for over 50 years. One of his favorite slogans was, *Free Gas, if we fail to wash your windows.*



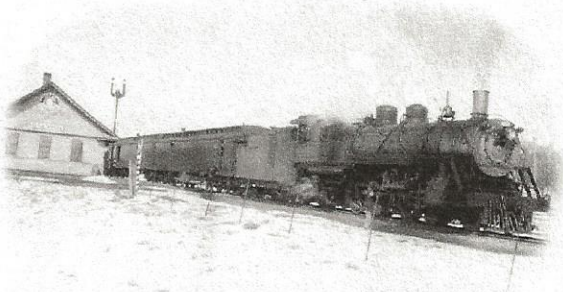
## Log Cabin Station

This small log structure was built in the 1920's, with a six stool lunch counter and two cozy booths. There was a two stall repair garage to the west and a two room living space to the rear. The *three pump* gas station started out with Tidex and Tydol gas, then Shell and eventually Phillips 66. The Log Cabin was removed in the late 1970's to make room for a new structure which is now the Schiele building, located at 202 Central Avenue S. ( This photo was taken in 1933 )



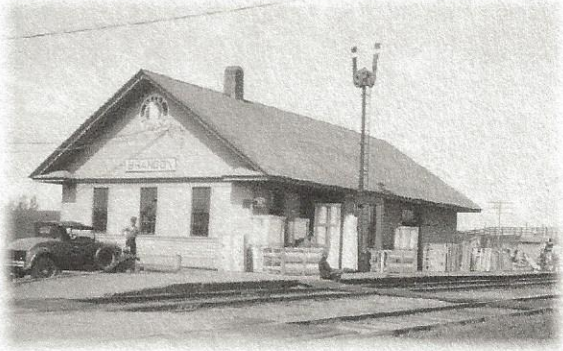
### **Great Northern Railroad Steam Engine**

The St. Paul & Pacific Railroad reached Brandon in the fall of 1879. The railroad soon became known as the Great Northern Railroad. Eventually, there were four passenger and four freight trains coming daily to Brandon. The Galloping Goose, Oriental Limited, Western Star, Empire Builder and the North Coast Limited were some of the trains that passed through our town. In 1970, train service to Brandon was discontinued in favor of improved local and Interstate roads.



### **Great Northern Railroad Depot**

This depot stood for many years as a monument to days gone by. Notice the freight on the platform. John Hammergren had the first horse drawn dray line for local freight pickup and delivery to and from the depot. Ted Plaster, Matt Pischke and Charlie Wilken also hauled freight. Jake Goering came to Brandon in 1922 and was the Agent Telegrapher for the Great Northern Railroad for 51 years.



### **U.S. Highway 52 Construction - 1932**

This was the first concrete highway at this location. It was put in with the help of mule teams. The men who worked on this highway construction had to deal with the heat, wind and dry cement in their eyes, noses, mouths and ears. On This picture you can see the first Frank's Standard Station, the Jake and Hortulana home and Chippewa Lutheran Church. In 2006, this is the intersection of County Roads 82 and 7.

