



Chippewa  
Park

# Chippewa Park News Extra

**50¢**  
Souvenir  
Edition

Supplement to  
Lake Region  
Echo  
Alexandria, MN  
June 10, 1987

Many events  
scheduled  
for Flag Day  
festival - 3C

Evansville  
woman finds  
self in  
1924  
photo - 5C

People of  
county  
will affect  
park's  
future - 17C

Map shows  
park;  
plenty of  
parking  
available-23C

## Chippewa Park memories bring back 'good old days' for woman

Her memories are highlighted by a cigar, a speaker and a lovers' tub. For Laura Skrove, memories of the county fair held at Chippewa Park are those of the Roaring '20's -- a happy, carefree time.

Skrove, who was 20 years old and newly married in 1923, attended the fair with her husband and her sister-in-law.

Her husband, George, was kept busy parking cars. But Laura Skrove and her sister-in-law had lots of fun.

"What did we do? You name it!" exclaimed Skrove, remembering. "They had all kinds of different things for young people to do."

That's where the cigar comes in, and, as Skrove tells it, it was "the highlight of the day."

"Test your strength and ring the bell!" the barker had called, and Skrove saw a tall pole, with a bell on top.

The object of the traditional test of strength was to use a hammer to send a weight up the pole and ring the bell.

Skrove's companion was first to try the game.

"She only got about halfway up,"

said Skrove. "I wasn't going to try -- you had to pay ten cents to do it -- but they finally coaxed me into it."

"I took one swing, rang the bell and the man called, 'Give that lady a cigar!'"



Laura Skrove

Skrove chuckled a minute at the memory, then held her hands in the form of a small circle.

"I was a little skinny thing," said the rural Brandon resident. "There were flappers in those days -- oh, yes, even here -- but I was a worker, not a flapper."

"I think I surprised everyone by ringing that bell. But if you'd been on a farm, you'd know where I got my muscles!"

Skrove doesn't remember what happened to the cigar. In any case, she and George had to go home in time for milking before returning to Chippewa Park for an evening of fun.

And that's where the "lovers' tub" comes in.

"They had a 'lovers' tub' on something like a merry-go-round," explained Skrove. "You'd sit in it, and it spun around and around."

The "tub" was built for four, but Skrove's gang of six friends climbed in.

"George had to sit on my lap," said Skrove. "And I'll tell you, that fella who was running it put all the speed on it he could."

She burst into laughter.

"I thought we were going into

Skrove... Turn to Page 22C



### Along the lakeshore

HORSEBACK RIDERS enjoyed a warm afternoon's ride in the cool shallows of Devils Lake at Chippewa Park. The park has been used for a variety of activities for many years by Douglas County residents. Photo by Karen Stensrud





# A Historic Past

## Future of Nelson's land more certain, thanks to efforts of park association

**Editor's note:** The following story is adapted from an article printed July 18, 1986, in the Lake Region Press.

"When I was a kid eight years old, I came up here," Hillard Nelson said, then laughed: "That puts me way back, doesn't it?"

When Nelson surveys his land, nestled between Little Chippewa and Devils Lakes three miles north of Brandon, his mind sifts back through time to the history of the place.

"There's a lot of history" surrounding the 22 acres of land that has been known to many as "Hillard's Park," he says.

Nelson and his wife Delores have let people use the land for many years as a free recreational site.

Now, a group known as the West Douglas County Park and Historical Development Association hopes to raise enough funds to make the area an official county park, to be developed and maintained by the Douglas County Park Department.

It was Nelson's wish that "Hillard's Park" -- now known by its old name of

"Chippewa Park" -- remain an area open to the public.

"This has been a gathering place for people for a hundred years," said Nelson, who bought the land in 1944.



Hillard Nelson

The Chippewa Indians had their main camp at the site at one time, according to Nelson.

"Some are buried up that way," the farmer said, gesturing towards a hill near the park. "There are some Indian mounds near here."

Around the time Nelson bought the land, an old settler told him how the Sioux had once tried to drive the Chippewa out of their camp. The settler told Nelson he had seen Indians lying dead, slain by enemy arrows, on a hill above what is now the park.

When the winding road through the park was graveled and graded last summer, a lot of Indian pottery and other artifacts were found just below the surface.

"There are lots of stories," said Nelson. "A fella could just keep going."

"Vernon Lehn once told me that his grandfather and a friend went out one time and shot buffalo west of here. They shot 70 to 80 buffalo. They were getting in their corn. That's how it was in the 1850's and '60's."

Nelson pointed across Little Chippewa Lake, to where two silos stood. Old plat maps show that area as the first Brandon town site, he said.

Nelson visited his grandparents near the park when it was the site of the Douglas County Fair in 1923.

He remembers the fair well: a small merry-go-round, a ferris wheel, women in long skirts and, of course, lots of children.

"They had quite a crowd here," Nelson said.

The park still gets crowded on hot summer afternoons, Nelson said, when there might be as many as 50 people out for a swim or a picnic.

Those people have been trespassing, said Nelson. But he isn't about to do anything about it.

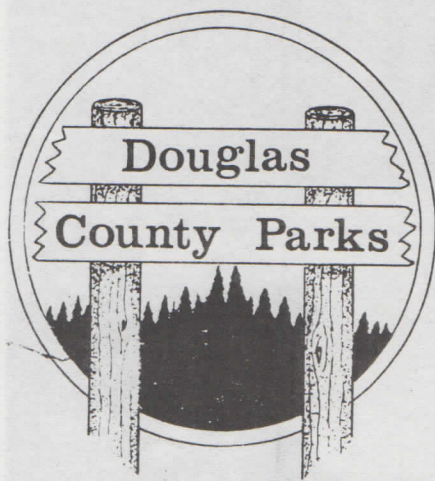
"It's been a gathering place for so long," he said.

At 72, Nelson says it's time to sell the park. If the people in Douglas County have anything to do with it, it appears Nelson's dream of having "Hillard's Park" turned into "Chippewa County Park" will become a reality.

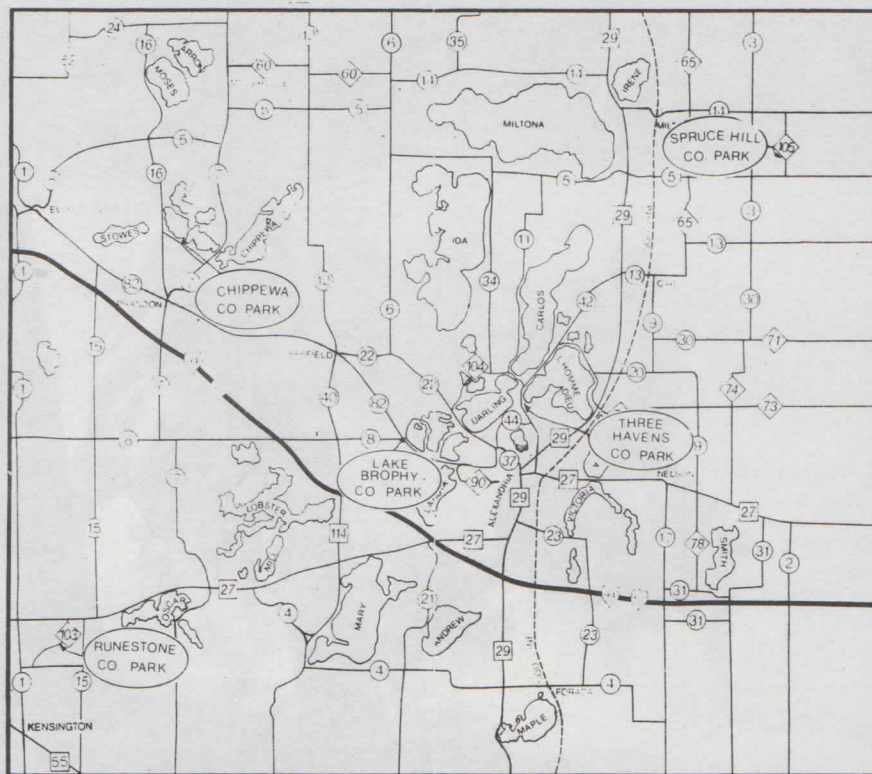
"Everybody's enjoyed the place so damned much," Nelson said. "I'd like it to stay a free park for the community to use."

# ENJOY THE COUNTRY

COME SEE WHAT DOUGLAS COUNTY HAS TO OFFER



Catch the Fun!



## Douglas County

Douglas County is in the central hills and lakes of Minnesota. I-94 provides easy access to all the county's parks, towns, and resorts. For trip planning help, call:

Alexandria C of C (612)763-3161  
 Alexandria/Douglas County Area Resort Assoc. (612)763-3424  
 Toll free (Minn.) 1-800-247-0883  
 (National) 1-800-423-2324

### Facilities Available

	Lake Brophy	Three Havens	Spruce Hill	Runestone
Play Grounds				
Rest Rooms				
Picnic Tables				
Charcoal Grills				
Drinking Water				
Softball Field				
Picnic Shelter				
Electricity				
Snowmobile Trail Data				
Parking				
Horseshoe Pits				
Community Building				
Ski&Toboggan Hills				

### Other Items of Interest

The Douglas County Park Board, with other civic groups, maintains two public beaches. One is on the south end of Lake LeHomme Dieu and one is on the north end of Lake Latoka. The Park Department also maintains the county's abandoned cemeteries, preserving an important link with our pioneer heritage.





# Chippewa Park Fun Festival

Sunday, June 14th  
Flag Day  
11 A.M. til DUSK

**A 30 acre park full of fun and activities for all ages !**

Advance Sale Buttons Available \$2.00 each  
obtains free admittance to the festival.

ADMITTANCE AT THE GATE \$2.00 per person  
\$8.00 per family

THE FIRST 1000 CHILDREN WILL  
RECEIVE AN AMERICAN FLAG!  
(AGE 0-12)

11:30 A.M. FLAG CEREMONY by  
FERGUS FALLS VFW #612 with Honor Guard &  
Heritage Group ECUMENICAL CHURCH  
SERVICE with the COMMUNITY CHOIR

## FOOD!

- DOUGLAS COUNTY PORK PRODUCERS  
\* pork feed with all the trimmings
- BAR-B-QUE BEEF STAND
- LIONS CLUB HOT DOG WAGON
- DOUGLAS COUNTY DAIRY PRINCESSES  
\* serving ice cream bars
- AREA CHURCH GROUPS  
\* serving coffee, pie, bars

## ENTERTAINMENT

- VIKINGLAND CHORDSMAN
- PATTY and the PINE TONES
- TOOT 'N GRAMPS
- BLUE KNIGHTS
- EVANSVILLE COMMUNITY BAND
- BRANDON POP CHOIR
- SWEET ADELINES
- PONY EXPRESS SQUARE DANCERS
- BRANDON HIGH SCHOOL BAND
- ELECTRIC PIANO MUSIC by  
CARLSON MUSIC CENTER

## AND MUCH MORE . . .

HERITAGE DISPLAY, VINTAGE CARS, ANTIQUE  
GAS ENGINES, WEST CENTRAL MINNESOTA  
MUZZLE LOADERS, ANTIQUE EQUIPMENT, etc.

ALL THOSE WHO WERE PRESENT AT THE  
1924 PAGEANT IN CHIPPEWA PARK  
WILL RECEIVE A  
COMMEMORATIVE FLOWER!

## SOUVENIERS

EVANSVILLE SENIORS  
BINGO  
All Afternoon  
the more that play —  
The more we pay!!!

## JAIL

COMPLETE WITH SHERIFF ART EISNER  
AND DEPUTIES  
For a fee, you can have your mother,  
husband, wife, boss, best friend or worst  
enemy thrown in the klink!  
Purchase a Polaroid picture of your time  
spent in jail!  
Help from East-West Moe Luther League!

## DOG OBEDIENCE DEMONSTRATIONS

PALM READER  
Judy Rost

HOT AIR  
BALLOON

DOUGLAS COUNTY  
HISTORICAL SOCIETY  
SLIDE SHOWS

## CHILDREN'S ACTIVITIES

- PONY RIDES - by Don Hart
- FISH POND - by Jr. Girl Scouts
- PETTING ZOO - 4 H
- HELIUM BALLOONS - 4 H
- LLAMAS - with Jim Arvidson
- OLD TIME COSTUME CONTEST  
• 4-5-6 grade county-wide  
• Judging at 2:00 P.M.

AND MUCH MORE!

CLOWNS - CLOWNS - CLOWNS!

BOAT  
DISPLAY

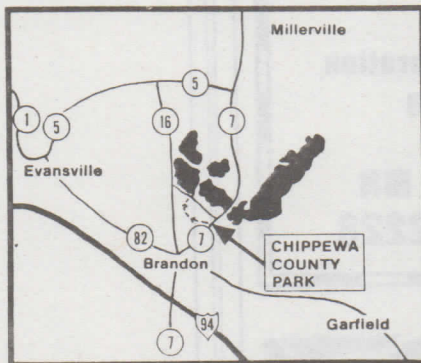
AMATEUR  
WATER SHOW

HORSE DRAWN WAGON RIDES  
through a picturesque  
wooded trail by Central Minnesota  
Draft Horse Association

LIMITED EDITION (500)  
BARCLAY 7" HUNTING KNIFE  
For advance orders, contact:  
Myron & Carole Severson  
612-524-2182

**All proceeds go toward the purchase of Chippewa Park**

- Limited parking available at the park
- **Free Bus Transportation** provided by  
Utopia Touring Club from the Brandon  
school parking lot - buses running to and  
from the park in 1/2 hour intervals.
- Everyone is invited to wear your  
Centennial & Ethnic Costumes!
- Bring blankets and/or folding chairs,  
if you wish.



CHIPPEWA PARK  
DOUGLAS COUNTY

is located 3 miles North of Brandon  
off of County Road 7  
between beautiful  
Little Chippewa & Devils Lakes!

WATCH FOR THE SIGNS!

**Chippewa Park Fun Festival Page Sponsored By**

**Thanks for  
Supporting  
Chippewa Park**

Join Us in Brandon  
July 31, August 1 & 2  
For Our Annual  
Midsummer Fest

Brandon  
Community Club



**VIKING  
COCA-COLA  
BOTTLING COMPANY**



- Vending Equipment
- Dispensing Equipment
- Coca-Cola Products

- Flavors
- Mixers
- Full Line Vending

106-12th AVENUE WEST

**763-6571**

ALEXANDRIA

**Ludke & Co., Inc.**  
Grocers-Wholesale

101 McKay Avenue N.  
Alexandria

**763-3194**



## 'Other history' of park is its archeological value

Chippewa Park has "two histories," according to Donald "Al" Liefkort, Douglas County Park Director.

There's the "recent" history remembered by those who saw the county fair at the park in 1923, or the pageant in 1924.

And there's the "other," more distant, history -- a history, said Liefkort, highly prized by the Minnesota Historical Society.

That "other" history, Liefkort said, played "a big part" in Douglas County's receiving a \$45,000 matching state grant for the acquisition and development of Chippewa Park by the county.

The state historical society has found evidence that people lived at the 30-acre site about a thousand years ago.

A "rough site survey" done six years ago, Liefkort explained, revealed artifacts -- including fire-cracked rock, bison bone, pottery and body sherds (human remains) on or near the ground's surface. Archaeological finds at Chippewa Park have been dated from 500 B.C. to 1200 A.D.

"A lot of it was dated as Stone Age, a thousand years old," said Liefkort, showing a report detailing the finds. "These are some of the oldest artifacts that have been found in Minnesota."

Chippewa Park's archeological

value, said Liefkort, puts stringent restrictions on development of the park -- particularly on the grading of roads. The Minnesota Historical Society, the park director explained, would want to complete a more extensive archaeological study before grading is done.



Al Liefkort

"It's an interesting site to them," Liefkort said. "(And) it's a good site for more study. Any place with evidence of people in Minnesota one thousand years ago is worth looking at."

*Chippewa Park...  
for future generations*

*Some of us have enjoyed this park in years past - picnicing, swimming, just all-around relaxing.*

*Working together to preserve this land for a county park will ensure us with the fact that our families will always have a place to go for serenity.*

**NELSON'S STORE**  
EVANSVILLE - 948-2232

•GROCERIES •FRESH FRUIT •FROZEN FOODS & MEATS  
•KEY WORK CLOTHES

**Serving  
Central Minnesota  
since 1917**

\*\*\*\*\*

**Steinbring**  
Chevrolet-Cadillac-Mazda  
612-762-2114 • ALEXANDRIA, MN

 **SAVE**  
**10% Off**  
Photo Finishing  
June 10 - 17  
**TRUMM DRUG I & II**

Monarch Photo  
 **Makes the Difference**

600 Fillmore  
763-3111  
1501 Broadway  
763-3116  
Alexandria, Minnesota

**Help  
Support  
Chippewa  
Park**

**Floyd's Cabinet  
Shop**  
Furniture Restoration  
& Framing  
Box 74  
Evansville, MN  
(218) 948-2228

Swim • Picnic • Camp  
**E • N • J • O • Y**

**Chippewa Park**



Pete's  
**County Market**

...COMPARE THE BOTTOM LINE  
1986 Super Valu Stores, Inc.

HWYS 27 & 29      762-1158

**SWIM-PICNIC-CAMP**

My kids have used "Chippewa Park" for swimming for many years. It's close to home and a great place to cool off and picnic at in the summer.

Let's all work together to make this beautiful place a County Park.

Bob Thoennes

**Bob's Standard**  
Brandon, MN  
Full Service Gas Station with Live Bait & Tackle.





ABOUT 1,000 PEOPLE are pictured in this photo taken at a special pageant held at Chippewa Park in 1924.

## They remember 'Search for Light' at park

One wouldn't have guessed that an obscure old photograph would cause such a stir.

But members of the West Douglas County Park and Historical Development Society were ecstatic to find that Howard Johnson, a Detroit Lakes resident, owned such a photograph.

The picture was taken in 1924 at Chippewa Park. It is one of the few existing photographs of early events at the park, soon to be a county park, which has its own ghosts -- ghosts of a historic past.

The occasion for this particular photograph was a July 30, 1924, "Search for Light" religious pageant. The picture shows about 1,000 people of the 3,000 who attended that day. Over 70 of those people have been identified -- at least tentatively -- so far.

Ruth Frykman was surprised to find that she herself was one of the faces in the old photograph.

Seven years old at the time of the "Search for Light" pageant, Frykman didn't recall being present.

But an older relative who saw the

photograph pointed right to Ruth.

"Yes, absolutely," the relative said. "That's you."

Frykman, whose most vivid memories of Chippewa Park are those of the county fairs held there, agreed that it would be natural for her to have been at the pageant.

"Looking at the picture, I thought it looked like me," said Frykman. "I was probably very independent, and I was by myself. One of the women elsewhere in the picture could have been my mother."

"And I have no doubt that my parents were there. That would just be normal. They were very interested in things like that....We always went to church, yes, but they were very community minded, too. My dad was very interested in the park and in the fair."

Frykman, who grew up in Brandon as the daughter of Olaf and Clara Shurson, said she didn't get to Chippewa Park as often after she married and "moved all the way to Evansville," she explained with a laugh.

But she recalls family reunions,

Sunday afternoon picnics, church gatherings and Fourth of July celebrations held at the park.



Ruth Frykman

"I don't remember when it was that they quit having all the big gatherings at the park," Frykman said. "In high school, we had our school picnics out there, and they'd get us all in a big

cattle truck and we'd stand in it to ride out to the park."

Evening swims at the park, Frykman said, were "a big event" when she was a young girl. Her children sometimes swam at the park. When her grandchildren visit, they swim there, too.

The park, said Frykman -- a vague, young girl's face in the 1924 photograph -- has historic value because of those family times.

"It's been used all these years as a place for family entertainment," Frykman said. "It's nice to have such a place of beauty that's open to the public."

Eunice Peterson is the stocky little girl near the front, kneeling, in the navy blue sailor hat she wore for special occasions.

Peterson's memory of that hat made it easy for her to identify herself in the 1924 photo.

"Somebody who knew me said it was me," said Peterson, now a resident at Knute Nelson Home in Alex-

Pageant. . . Turn to Page 21C



**Let's help improve  
Douglas County...  
Support Chippewa Park!**

# Alexandria Clinic P.A.

**ALEXANDRIA**  
763-5123

**OSAKIS**  
859-3038

**EVANSVILLE**  
948-2234

#### Family Practice

William G. Heegaard  
Stephen G. Henry  
Vernon G. Kuhlmann  
Sandra L. Johnson  
Steven M. Longbotham  
James H. Lueders  
D. Mark Odland  
Douglas E. Perkins

#### Family Practice & Pediatrics

Richard D. Stewart

#### Internal Medicine

David L. Shuster  
Ronald P. Verant

#### General, Thoracic & Vascular

**Surgery**  
Samuel Parra

#### Obstetrics & Gynecology

Paul H. Engebretson

#### New Family Practitioners

Paul W. Bergstrand  
starting July 20  
Steven C. Ferguson  
starting August 3





# Local researchers seek facts on park

Living on land his grandpa may have traveled has given M.L. "Bud" Greenquist a taste for family history, and history in general.

This time, his hobby has set him a tough task.

It's not easy, said Greenquist, to collect history on "a little isthmus of land between two lakes."

Nevertheless, Greenquist and Nell Anderson, both rural Brandon residents, are gathering any information they can find to write a history of Chippewa Park.

"Whether it will turn out to be a book, a pamphlet or one page of history, I don't know," said Greenquist, who expects the research to take "at least a couple years."

**"Alexandria Citizen News: A special invitation is being extended to county fair enthusiasts in all parts of Douglas County to attend the next regular meeting of the Alexandria Commercial Club...to discuss the possibility of a county fair."** (Evansville Enterprise, 1923)

Greenquist and Anderson have collected much of their data so far from old newspapers: the "Evansville Enterprise" (1892-1946), the "Brandon Echo" (1898-1908) and some copies of the old "Park Region Echo."

Greenquist, who has been indexing



# Park Region Echo

ALEXANDRIA, DOUGLAS COUNTY, MINNESOTA, THURSDAY, JANUARY 20, 1916.

NUMBER 48.

### Condition is the Development of a System.

We may well say that all these things are the product of an evil system that has grown up without the aid of any man. Yet the conditions themselves remain and are utterly at war with free institutions and democratic principles as surely as they make the farmer's toil in vain and his hopes a bitter jest.

And yet the day of all these things passing, the day when the farmer will be successfully bamboozled and lied, gouged and deluded. A new movement is steadily rising in the Northwest. As surely as truth and justice are true and just, it will bring these merry riders upon the farmer's back and dislodge them forever. Hitherto they have ridden in security because the farmers they would not unite in a common cause or else when united suffered themselves to be side tracked. The plotters and manipulators used to work with a laugh that the farmer would unite and never would make an effort in their own behalf. They are now about to learn how foolish and false is that assumption and the teaching will be worth the attention of the whole United States. For when it is over Privilege will have received its most memorable defeat and one old persistent question I have been answered. There will be nothing the matter with farming in the northwest.

**Crookston Rents All But Three Sites.** Crookston, Minn., Jan. 17.—Of 19 town buildings closed in Crookston

### Expensive Service

New York City to San Francisco, via New York Central, Lake Shore, Chicago, Burlington & Quincy, Union Pacific and Southern Pacific:  
 One ton mail ..... \$265.50  
 One ton freight ..... 60.00  
 One ton express ..... 135.00  
 100 pounds mail ..... \$15.28  
 100 pounds freight ..... 3.00  
 100 pounds express ..... 6.50

**The Railway Postal Graft**  
 The following table giving a comparison of the railroad rates for carrying mail, freight and express, was prepared by Prof. Henry C. Adams, statistician of the United States Postal Commission, generally known as the Welcott Commission. Some revisions have since been made (1907) but they are too slight to effect the depravity in charges here shown.  
 New York City to Buffalo, 440 miles:  
 One ton mail ..... \$31.65  
 One ton freight ..... 7.80  
 One ton express ..... 12.50  
 100 pounds mail ..... 1.58  
 100 pounds freight ..... .39  
 100 pounds express ..... .63  
 New York City to Chicago, 1,000 miles:  
 One ton mail ..... \$71.39

### Early Christian Socialism

Much has been said and written about the communism of Pentecost. All that believed were together and had all things in common; and sold their possessions and goods, and partur them to all as everyone had need. This description is repeated and amplified in Acts 4:34, 35. But while this was a beautiful and significant episode, there is nothing in the remainder of the New Testament history or epistles to indicate that the believers continued permanently this communistic plan of living. It may have been the intention of the Holy Spirit that they should do so; an intention thwarted by the greed and desert of Ananias and Sapphira, who brought the first note of discord into the early church. Or it may be that this Pentecostal communism was simply to provide for the great multitude of Jews who, having come from distant cities to the feasts of Passover and Pentecost, found themselves unprepared for a longer stay and, when the events of Pentecost prolonged their residence in the city, had to receive help.

### May be an Effort to Cripple Twine Plant

Frank Day wants prison labor of Minnesota put to work on the public highways. Frank is not alone in the matter as the question has long been agitated, but there has always been a suspicion that the Huxley Trust was back of the move in order to cease the output of twine, binders, mowers and other farm machinery. For this reason the matter has not been given much consideration in the state legislature. Then too, prison labor on the highways is a matter of experiment as yet, except in the South where criminals are worked on the roads with ball and chain, and the humane people of Minnesota would never stand for that. We think that as long as our state prisoners can be kept at work making twine and binders they will get enough physical exercise. Our new state prison is a good sanitary place, has plenty of wholesome food and is really more like a big factory than it is a prison.

### This Happened in 1915

A year ago a young man—his name doesn't matter—made a sensible New Year resolution. He had been married a few years, he received a small salary and had been mortgaging his future—drifting into debt. The sums he owed were not large, but they were larger than he seemed able to shake off, and his wants were steadily increasing. He determined to get rid of the deadening weight at any sacrifice. His work was such that he could work overtime and get extra pay for it. He had perfect health and discovered for the first time that it was valuable capital. He put that health

### Have No Cause For Worry

**The Same Economic Methods to Build Up A Community.**  
 Tuesday, W. Kappahn of Moberly, and Andrew Peterson, A. J. Haug and Carl J. Newhouse of Brandon passed through Alexandria on their way to Parkers Prairie, where they attended the district clearing house convention of the Farmer's Equity Societies. These organizations are gaining strength as their work becomes better known and understood. A Haugie said local business men had nothing to fear from the Equity Societies. To the contrary, they would find the Equity organizations will be a help in stopping catalogue competition. He said a large amount of the people order goods from the catalogue houses because of bargains offered on such merchandise as sugar. But to get that an order for other goods must accompany the order. In many cases people in order to make up the required amount, will order things they had not thought of buying. It is this kind of buying that cuts into the business of the local merchants and cuts into his profit. It is true, he said, that the Equity organizations will order such heavy commodities as sugar, salt, coal and cement. Through their clearing house organizations they order these in train load lots and can beat the most glaring prices of the catalogue houses. The people do not need to send to the catalogue houses for the sugar. The catalogue prices offer a

newspapers for the Douglas County Historical Society, is constantly on the alert for "anything that hasn't yet been discovered" on the 30-acre Chippewa Park. The task is time con-

suming, he said. "But it's lots of fun," added Greenquist, who was born and raised near Evansville and moved back to the area in 1985. "It's fun to find tidbits

and form them into little pictures (of what happened)."  
**"Douglas County Community Fair Research. . . Turn to Page 20C"**

## Thank You

to all who helped make Chippewa Park what it is today.

We are so happy to have the opportunity to enjoy another Douglas County Park. A place to relax and spend time with loved ones.  
**Jim & Jo Bjerknæs**

# JIM'S RED OWL

406 BROADWAY - ALEXANDRIA  
 763-6628

Yes...  
 You can give him something special.  
 You can give him the future.

## "Chippewa Park"

Life Long Dental Care

# DENTAL HEALTH ASSOCIATES

Brandon, MN 56315 612-524-2270  
 107-14th Ave. E. Alexandria, MN 56308 612-762-1551  
 Osakis, MN 56360 612-859-4330  
 OPEN EVENINGS...by APPOINTMENT





# A Flourishing Present

## Chippewa Park project comes 'once in a lifetime'

When Hillard Nelson said he was going to sell the 30 acres of land that comprise Chippewa Park, a lot of people in the county -- including Nelson himself -- didn't want to see it go.

It's Nelson's wish -- and that of the West Douglas County Park and

Historical Development Association -- that the land remain a public, county park.

"Fears of condominiums dance in our heads," wrote the members of the development association earlier this spring.

The West Douglas County Park

and Historical Development Association hopes to raise \$45,000 by August 1. An initial application for \$45,000 in matching state funds has already been approved.

Nelson's Park, say the members of the development association, is "a nature lover's paradise," a hollow of land between two lakes, surrounded by "glaciated hills adorned with stout oak and maple trees."

The park has for years been a popular spot for family gatherings, swimming, boating and fishing.

The Chippewa Park Fun Festival to be held on Flag Day, Sunday, June 14, is the culmination of months of organization on the part of residents of Douglas County. The proceeds from the Fun Festival will be contributed towards a fund for the purchase of Chippewa Park by the county.

Sunday's festival promises to be a big event, and a special one, echoing the county fairs and pageants held at Chippewa Park in the 1920's.

In honor of Flag Day, the first 1,000 children (ages 0-12 years) entering the park will receive an American flag.

A flag ceremony by the Fergus Falls V.F.W. and Honor Guard will include an ecumenical church service

with a community choir.

Food, games and entertainment will be in abundance.

Children's activities will include pony rides, a fish pond, a petting zoo, helium balloons and a costume contest.

Those providing entertainment include lots of local talent: the Vikingland Chordsmen, Patty and the Pine Tones, Tootin' Gramps, Blue Knights, Evansville Community Band, Sweet Adelines, Brandon pop choir and band, square dancers, clowns and more.

The purchase of a button supporting Chippewa Park provides admittance to all the festival's activities.

Enthusiasm for the park project has been high in a number of Douglas County communities, according to Chris Korkowski, a member of the Brandon Community Club and the West Douglas County Park and Historical Development Association.

Preparations for the Flag Day festival involved hundreds of hours of work by many interested in the future of Chippewa Park, Korkowski said.

But, she added, it's work that comes around "once in a lifetime."

"It's really a privilege to work on the Chippewa Park project," Korkowski said.



POINTING THE WAY to the Chippewa Park Fun Festival are members of the Cadet Girl Scout troop from Brandon, who painted signs for the park.

### RAINBOW COURT RESTAURANT

1610 Broadway  
Alexandria  
762-0744

*Supports  
Chippewa Park  
Development!*

*We support  
Chippewa  
Park!*

### Strom Construction Of Brandon, Inc.

RT. 1, BOX 87  
BRANDON, MN 56315  
524-2379

## Look What's Coming in July!

P.R.C.A. SANCTIONED  
"World Famous"

### SUTTEN RODEO

Friday, July 10 • 6:00 PM  
Sunday, July 12 • 12 Noon & 6:00 PM  
Radisson Arrowwood Arenas - Alexandria  
Featuring: BARRELS, CALF ROPING,  
SADDLE BRONC RIDING, BULL  
RIDING, also...Trick Riders & Ropers  
By Waska Riders Saddle Club  
Tickets: \$5.00 Adults  
\$3.00 Children 12 & under

### LIMITED WARRANTY

- CONCERT -  
Friday, July 17 • 8:00 PM  
Runestone  
Community Center  
Alexandria, MN  
Tickets: \$8.00

### SCHEER'S Lumberjack Shows of Champions

Saturday, July 18 • 1:00 PM  
Viking Speedways  
Alexandria  
Tickets: \$3.00

### MUD WRESTLING The Chicago Knockers

Sunday, July 19 • 8:00 PM  
Runestone  
Community Center  
Alexandria  
Special Appearances by Local Celebrities!  
Tickets: \$5.00

SPONSORED BY

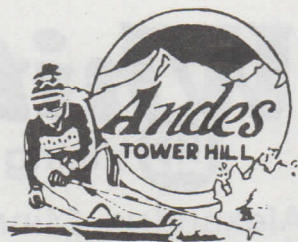
### Alexandria-Douglas County Resort Association

Tickets Available at the City Ticket Center  
319 Fillmore - Alexandria

*Now Available thru Nov. 1 for  
Bookings for Family Gatherings,  
Reunions & Meetings*

### ANDES Tower Hills

1-965-2576  
886-5420  
15 Mi. W. of Alex





# Paul's Polaroid will snap mugshots Sunday

If you land in jail at Chippewa Park on Sunday, chances are you'll be guarded by "Sheriff" Art Eisner's toy pistol.

You'll also be looking right down the barrel of Paul Bourdeaux's Polaroid.

Those attending the Flag Day celebration can help raise money for the park by having their mothers,

fathers, husbands, wives, best friends or enemies thrown in the klink, according to publicity posters for the big event. The cost of jailing someone will be \$5 -- or \$25 for one of the "big wigs" present.

But Paul Bourdeaux, a sixth grader at Brandon School, has figured out a way to raise still more funds for the county park.

Paul, 12, will be taking Polaroid "mug shots" of the jailbirds, then selling them to those behind bars -- or those who have put them there. He'll donate the money he raises to the park.

The youngster is excited about his role in the park fundraiser.

"I'm getting more active in this than I ever thought I would be," said Paul, whose mother, Annette, is in charge of East and West Moe Luther Leaguers who will be selling arrest warrants for Chippewa Park's jail.

Paul did an interview about Chippewa Park for an article in "The R.A.P. Sheet," his school newspaper. His subject was Chris Korkowski of Brandon.

"It turns out she brought up the jail they were planning," Paul explained.

"I'm in photography, and I guess I was the first to ask her about taking pictures."

Chippewa Park, said Paul, is "a pretty historic place."

"There was that pageant they held there," he said, "and it's been around a while. It's a nice place for a park. It's not spoiled."

Kids his age, Paul admitted, don't think much about the park's history. But the "fun they could have there" -- swimming, boating and fishing -- holds their interest in turning the area into a county park.

"I hope they get the park," said Paul. "That way no bulldozers would run through it or anything."

For his task Friday, Paul wrangled

Paul. . . Turn to Page 16C



PAUL BOURDEAUX and his Polaroid are ready for the Flag Day celebration. Bourdeaux, who became interested in photography through a 4-H project, will take snapshots of "jailbirds" Sunday, with proceeds to be donated to the park fund. Photo by Karen Stensrud

**We offer Ethanol & Non-Ethanol Gas**  
**Morning Coffee - 15¢**  
 Bring in your own coffee cup (any size)  
 in the morning and Rudy will fill it for 15¢!

**Pester Derby**

1324 Broadway                      Mon.-Sat. 6AM-Midnight  
 Alexandria                          Sun. & Holidays 7 AM - 11 PM

**Sheriff - Art Eisner and his deputies will be seeing all of you at Chippewa Park on Sunday!**

**Have Art throw your friends in the klink - your way of donating to Chippewa Park!**

**A & R WELDING**  
 BRANDON  
 "Your welding & parts headquarters"  
 524-2213

**Have An Extra Special Day**

**Picnic at Chippewa Park**

**White Mart**  
 Viking Plaza Shopping Center  
 Alexandria, Minn. • Phone 762-1534

**Chippewa Park**

Let's All Help Purchase Chippewa Park  
 Join the Activities on Sunday and Make Chippewa Park A Reality For

- Picnics
- Reunions
- Swimming

**Ostlund Hardware**  
 Brandon 524-2298





### Ready for petting zoo

JON ROSSUM's baby goats will be one of the attractions at the festival's petting zoo, run by the Moe 4-H Club. Also helping out will be Moe's Discovery 4-H participants, children ages 6 to 8 years old who are introduced to the 4-H program. Photo by Karen Stensrud

## Brandon Mobile Home Park

Brandon, MN  
612-524-2434

Welcomes You  
To  
Chippewa Park!

Thank those  
who worked for  
Chippewa Park  
by enjoying its  
beauty!

.....  
**Brandon  
Car Wash**  
BRANDON, MN

CALL FOR YOUR RESERVATION  
763-7712

**DEPOT EXPRESS**  
RESTAURANT & LOUNGE

Just Behind Big Ole, Alexandria

- STEAKS
- POPOVERS
- DINING ROOM
- SERVING FROM 11 AM TO 10 PM MONDAY-SUNDAY

- SEAFOOD
- NIGHTLY SPECIALS
- LOUNGE OPENS 9 AM to 1 AM
- 2 FOR 1 NIGHTS

- BURGERS
- BIG SCREEN TV
- BEST HAPPY HOUR IN TOWN

**CALL US TODAY  
763-7712**

**COUPON**

Any special in the dining room, any night of the week...

**\$1.00 OFF**

CALL FOR RESERVATIONS  
763-7712  
EXPIRES 8/31/87

**COUPON**

Carafe of Tap Beer  
**2 FOR 1**

763-7712  
EXPIRES 8/31/87

*"Join the Fun!  
Let's Make  
Chippewa Park a  
Reality."*

**Schiele  
Soderholm Auctioneers**

Wally Schiele #21-18, Brandon, MN 612-524-2605  
Steve Soderholm #26-11, Alexandria, MN 612-762-2075

*Community*

State Bank

A FULL SERVICE BANK

3rd and Maple  
Alexandria, MN 56308  
(612) 762-2181

Each depositor insured to \$100,000

... WHERE PEOPLE MAKE THE DIFFERENCE ...

## Enjoy Chippewa Park!

Four generations of our family have already enjoyed using the beautiful Chippewa Park site for recreational purposes. We encourage everyone to promote the purchase and development of Chippewa Park so that it will become a Douglas County Park and be preserved for many future generations.

We want to thank Hillard & Delores Nelson who have permitted us to use this area for the past 44 years. We want to thank Douglas County for having agreed to maintain this area as a Douglas County Park in the future.

BRANDON COMMUNICATIONS

BRANDON, MINNESOTA 56315      612/524-2283





### Choirs raise funds

BRANDON CHOIRS, directed by Tom Helder and Karen Carlson, held concerts last month as fundraisers for Chippewa Park. The concerts were well-attended and raised a total of almost \$350 for the park. Elementary students presented a musical ver-

sion of "The Wizard of Oz," while junior high (above) and high school choirs and instrumentalists presented programs. The Brandon High School band and pop choir will also be performing at Sunday's Chippewa Park festival.

## ENJOY THE PARK

Art Johnson, Chris Worley,  
Mike Steidl, Jim Delaney

IDS Financial Services  
1114 Broadway  
Alexandria, MN 56308

**IDS** AMERICAN EXPRESS

Personal Financial Planners

**762-8141**

## Best Wishes to Chippewa Park Broadway Floral

515 BROADWAY  
ALEXANDRIA, MN

**763-3300**

# Chippewa Park

**30 acres of fun and activities !**

### A&W CATERS WITH CARE!

WEDDINGS, ANNIVERSARIES, REUNIONS,  
PARTIES -- EVEN COMPANY PICNICS LIKE OURS!  
...AND THE YUMMY FOOD JUST CAN'T BE BEAT!!



**763-5540**

Hwy. 29 No., Alexandria

### A park for all seasons and reasons...

A Douglas County Park in our community will be beneficial to all who live in this area. From swimming to cross country skiing...picnics, reunions and the preservation of land. That's Chippewa Park! .....Let's all work together and make it a reality!

**FARMERS STATE BANK**

EVANSVILLE — 948-2259 Member FDIC

## Limited "500" Edition

Souvenir, 5 inch, "HUNTERS KNIFE"  
Barlow, LIFETIME guaranteed quality  
Stainless Steel blade  
and  
Rosewood handle.

LAZOR imprinted.

CHIPPEWA PARK  
Douglas County, MN

Each knife, individually engraved with identification number to be recorded with the owner's name in the Park permanent record ledger. A perfect keepsake, and collector's treasure!!

ALL PROFITS EARNED FROM SALES WILL BE DONATED TO THE CHIPPEWA PARK FUND  
(Anticipated donation, \$5,000.00)

Myron and Carole Severson, project chairpersons  
**(612) 524-2182**

### — MAIL ORDER FORM —

Please send me  knives.

Register for \_\_\_\_\_  
(Name)

Address \_\_\_\_\_

Cost each knife, \$30.00 plus \$3.00 shipping and insurance. Send request to Myron and Carole Severson, Box 127, Brandon, MN 56315.

— 500 LIMITED PRODUCTION —



## Limited edition knives offered

A "limited edition" of the Barlow Hunter's Knife will be available as a souvenir for neighbors, friends and promoters of Chippewa Park.

The limited production of only 500 numbered knives will be produced. The number of each knife and the name of its purchaser or receiver will be recorded in the permanent records ledger of Chippewa Park, making this truly a collectors item.

The Barlow knife is made to last a lifetime, with a stainless steel blade and crisp, laser-engraved name "Chippewa Park, Douglas County, Mn." on the genuine rosewood handle. Each knife comes in a leatherette sleeve and is individually boxed.

Souvenir knives will be on sale at the Flag Day celebration at Chippewa

Park at a cost of \$30 each.

To reserve a knife, contact Myron or Carole Severson, 302 Central Ave. N., Box 127, Brandon; or phone 524-2182. Add \$3 for shipping and in-

surance if mailing is requested.

All profits from the sale of the limited edition Barlow knives will be donated to the Chippewa Park purchase fund.



THE LIMITED EDITION Barlow Hunter's Knife will be sold as a souvenir of Chippewa Park. Only 500 of the engraved knives will be produced.

## Children's costume contest set

Children have the opportunity to be a part of Douglas County's history by dressing up in pioneer, Indian or ethnic costumes for the Chippewa Park Fun Festival to be held Sunday, June 14 (Flag Day).

All Douglas County fourth, fifth and sixth graders are eligible to participate in the Historical and Ethnic Costume Contest. Winners will receive prizes including a stereo and radios donated by Brandon T.V. and Communications.

## Making Chippewa Park a Douglas County Park Is Our Goal...

*See You At the Fun Festival, Sunday And Our Goal Will Be Reached*

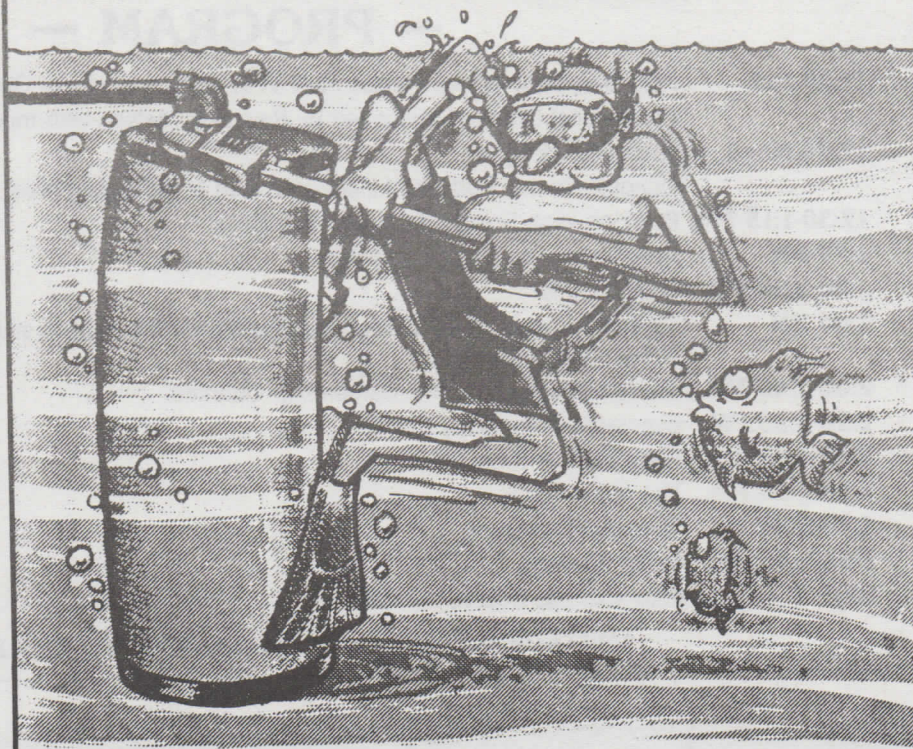
Serving Douglas County Since 1883

**Moe-Urness-Lund Mutual Insurance Company**

524-2294



## DON'T GET IN OVER YOUR HEAD!



Installing a water heater on your own is a lot more complicated than you may think. Why take chances? As your authorized A.O. Smith Sales and Service Center, we have servicemen who will do the job with professional skill and in accordance with all safety codes. We also offer a selection of the finest energy-saving water heaters on the market today—from the leader, A.O. Smith. For a free estimate, call us today!

**YOUR AUTHORIZED  
A.O. SMITH SALES & SERVICE CENTER.**

*Dick and Linda hope to see all of you at the Chippewa Park Fun Festival Sunday, June 14...working together will make Chippewa Park a dream come true!*

**WAGNER PLUMBING & HEATING**

*"Serving you with a full line of plumbing fixtures, faucets and water softeners"*

612-876-2228

"Let's Help Support Chippewa Park."

**H. Boyd Nelson**  
Alexandria, MN  
763-6682

*Let's Share in the Fun and Help Make A Park!*

**ECHO PRINTING**

316 North Broadway  
-next door to the Armory-  
Alexandria, MN 56308  
763-3939

Let's have some



right here in the heart of Minnesota.

There's nothing like a summer festival to get your "hometown" sentiments stirred up. And the Chippewa Park Fun Festival, Sunday, June 14, is no exception. Proceeds from the festival help the West Douglas County Park and Historical Development Assoc. — an organization that all of us in Alexandria can be proud of.

We think of Alexandria as the heart of Minnesota. And we think a television station, especially a new, locally-based station such as ours, can evoke some of those same hometown feelings.

We're affiliated with KSTP-TV, Minnesota's News Channel. Our proud new channel number — 42 — brings you uniquely Minnesota-flavored programming such as Eyewitness News, Good Company, Twin Cities Live and more. But not long after our July launch, you'll also see informative, valuable programming originating right here in Alexandria!

Put it all together and you'll understand why our commitment is "Hometown TV"...straight from the heart of Minnesota." And that's why we're excited to be part of the "fun!" See you at the festival!

**42**

**KSAX-TV**  
Alexandria

Hometown TV™  
Straight from the heart of Minnesota.



# More entertainment...



JIM ARVIDSON AND HIS LLAMAS



BRANDON HIGH SCHOOL BAND



THE BLUE KNIGHTS

## Hot air balloon will land in park

It's all systems go for a hot air balloon demonstration at the Chippewa Park celebration Sunday.

Marvin and Kenton Brown of Hancock, who have been balloonists for about five years, will land their brown and yellow Raven RX6 balloon at the park Sunday afternoon.

The two will demonstrate the workings of their balloon, then -- depending on temperature and weather -- take off from the park sometime after 6 p.m.

The Browns' hot air balloon is 50 feet in diameter and 63 feet tall.



PALM READER JUDI ROST

## Chippewa Park Fun Festival Sunday, June 14 — PROGRAM —

- 11:30 AM** Flag Ceremony by the Fergus Falls VFW #612 with Honor Guard & Heritage Group  
Ecumenical Church Service led by Rev. Ron Nielsen with music by the Community Choir
- 12:00 Noon** Food Stands Open  
Douglas County Pork Producers pork feed or BBQ beef meal - your choice for \$3.00.
- 12:30-1:15 PM** Brandon High School Band and Pop Choir
- 1:00 PM** Dog Obedience Demonstrations
- 1:20-2:00 PM** Blue Knights
- 2:00 PM** Costume Contest 4-5-6 grade, county-wide (on the second stage) - All participants meet at 1:30 PM at the second stage.
- 2:05-2:45 PM** Vikingland Chordsman & Barbershop Quartets
- 2:50-3:30 PM** Evansville Community Band
- 3:35-4:15 PM** Patty and the Pine Tones
- 4:20-4:30 PM** The Moon Tones
- 4:30-5:00 PM** The Sweet Adelines
- 5:05-5:45 PM** Tootin' Gramps
- 5:50- ?** Pony Express Squaredancers

AMATEUR WATER SHOW THROUGHOUT THE AFTERNOON



THE SWEET ADELINES



## Slide shows of towns to be shown

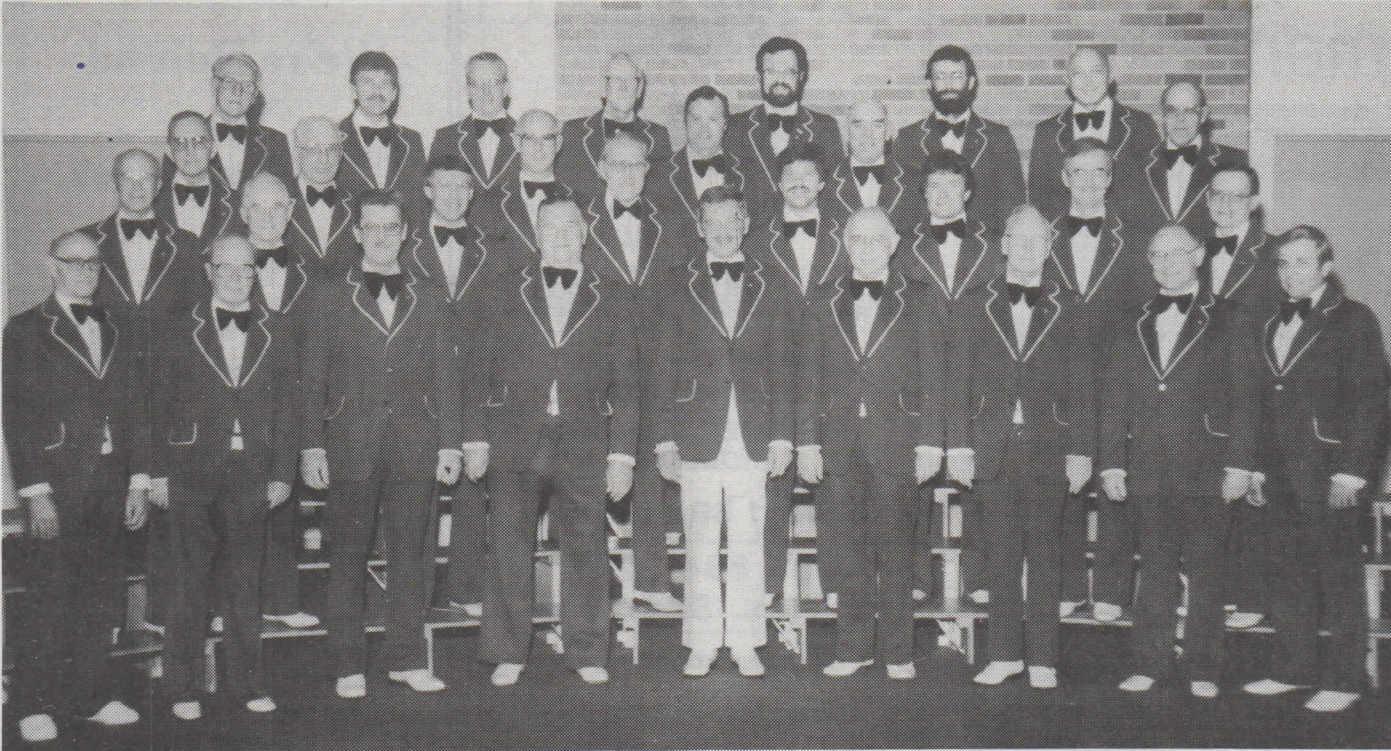
As part of Flag Day's afternoon festivities, the Douglas County Historical Society will present slide shows on the western and northwestern communities in Douglas County.

Residents of each of these communities will show historic slides that trace the history of five settlements.

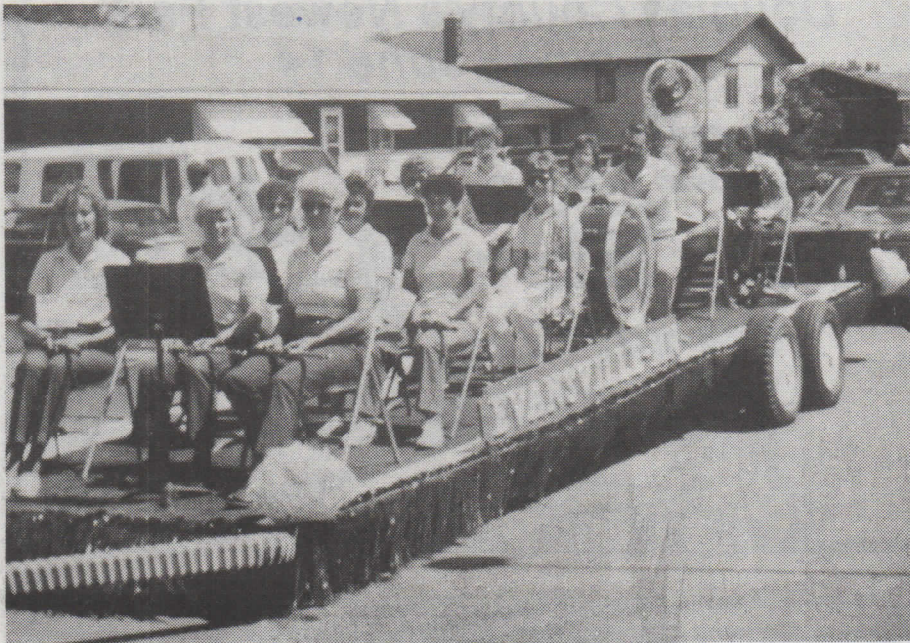
Following is a schedule of when each slide show will be presented:

- Melby: 1 p.m.
- Evansville: 2 p.m.
- Brandon: 3 p.m.
- Garfield: 4 p.m.
- Millerville: 5 p.m.
- Finnish settlement: 6:30 p.m.

Times will vary slightly, but every attempt will be made to maintain this schedule.



THE VIKINGLAND CHORDSMEN AND BARBERSHOP QUARTETS



EVANSVILLE COMMUNITY BAND

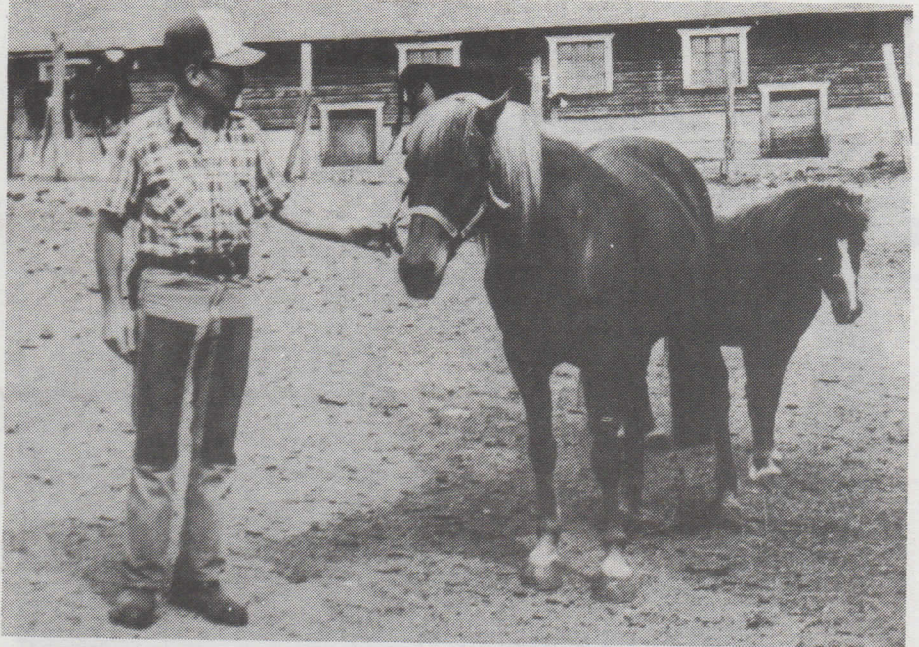


SENIOR CITIZENS CLOWN TROUP



Brenda M. Hellerman Cathy Lueders Rhonda R. Thronson

DOUGLAS COUNTY DAIRY PRINCESSES



DON HART'S PONY RIDES



GENE PAYNE AND CENTRAL MINNESOTA DRAFT HORSE ASSOCIATION



TOOTIN' GRAMPS



# More entertainment...



BRANDON HIGH SCHOOL POP CHOIR

**Roper**  
**Soft Water**  
•HOME •FARM •COMMERCIAL  
•INDUSTRIAL

---

**SALES-SERVICE-RENTALS**

SPRINGSOFT WATER  
CONDITIONERS  
IRON FILTER & RELATED  
PRODUCTS

RR #1 BRANDON

Call 834-2202  
or Res. 834-2857

We're Behind  
You  
Chippewa Park

**VISA** **ESLIC**

**VIKING SAVINGS ASSOCIATION**  
A FEDERAL ASSOCIATION  
1311 Broadway, Alexandria  
Phone 762-0236

Celebrate "**Chippewa Park**"  
Douglas County's Newest Park  
Sunday, June 14

**Bluegill Cafe**  
Downtown Brandon

- Open Daily
- Softserve Ice Cream
- Daily Specials
- Friendly Service
- Excellent Homecooked Food
- Orders to Go

524-2271

Stop In  
On Your Way  
to the Park!

**Doug & Kris Cibra**

**SUPPORT THE PARK**  
**JERRY'S**  
DISCOUNT FOODS

1103 Broadway • Alexandria

1/2 MILE WEST OF THE FAIRGROUNDS  
CITY RD. 82  
ALEX. 763-5426  
DAILY 8-5  
SAT. 8-1

**BUDGET MILLWORK & SUPPLY**

Your Complete  
Cabinet  
Supply  
Headquarters

Before You Buy . . . Check Budget Supply

**FATHER'S DAY SPECIAL**

SHORT SLEEVE SHIRTS  
**\$5.00 OFF**  
ALL BELT BUCKLES & STRAW HATS  
**20% OFF!**

**The WESTERN SHOP**  
VIKING PLAZA — ALEXANDRIA — 763-7778

**BROADWAY MEDICAL CENTER**

ALEXANDRIA DERMATOLOGY & UROLOGY  
762-1579  
L.A. Glesne, M.D. — R.E. Glesne, M.D.

ALEXANDRIA INTERNAL MEDICINE ASSOCIATES  
762-2192  
P.C. Florell, M.D. — J.E. McCrery, M.D. — F.A. Townsend, M.D.

ALEXANDRIA OB/GYN ASSOCIATES  
762-0273  
C.E. McKinzie, M.D.

ALEXANDRIA SURGICAL ASSOCIATES  
762-1539  
B.K. Glade, M.D. — J.H. Merickel, M.D.

ORAL & MAXILLOFACIAL SURGERY  
763-5117  
B.W. Jung, D.D.S.

RUNESTONE FAMILY PRACTICE, P.A.  
762-1146  
T.C. Hegstad, M.D. — A.K. Solien, M.D.

BRANDON COMMUNITY CLINIC  
524-2218

1527  
BROADWAY  
ALEXANDRIA  
MINNESOTA





Chippewa Park

Let's All Get Together  
and Help Support  
Douglas County's New Park

Holiday Inn

Vahalla Restaurant & Lounge

Wedding & Banquet Facilities

I-94 & Hwy. 29 S.

Alexandria

763-6577



Randy's

Mens Wear

VIKING PLAZA SHOPPING CENTER  
ALEXANDRIA, MN 762-2475

Chippewa  
Park

Let's make it a  
county park for all  
to enjoy!

A DAY TO  
REMEMBER...  
IS A DAY AT  
CHIPPEWA PARK!

Hillside  
Styling Center  
& Boutique

SPECIALIZING IN  
PERMS & CUTS


876-2115  
MILLERVILLE

Compliments  
of

Anderson  
Funeral Home

"Now in its fourth generation of family service"

320-7th Avenue East Alexandria 763-5900



What's so special about Chippewa Park?

**"Goin' Fishin' "**

**Lakeland  
Distribution  
Service**

"Your Delivery System for  
Lakeland Shopping Guide



**ENJOY  
CHIPPEWA PARK**

ALEXANDRIA NEWSPAPERS, INC.  
LAKE REGION ECHO AND LAKE REGION PRESS  
P.O. BOX 549, ALEXANDRIA, MN 56308 • 612-763-3133





GUARDED BY SHERIFF Art Eisner, a group including Dennis and Chris Korkowski, Dorothy Eisner, Kris Cipra, Carol Koep, Andy Beckman, and Dale, Debbie, Danny and Deanna Wussow tried out the jail made for the Flag Day celebration by D & W Construction.

*Enjoy a day  
at the Park!*

**Rose Korkowski**

*COLOR ANALYSIS  
AND  
AVON PRODUCTS  
DISTRICT  
MANAGER*

**524-2567**

## Paul

Continued from page 8

a deal on 40 cases of Polaroid film -- with 10 pictures to a case -- with a local camera dealer.

"I hope we won't have 400 people in jail that day," Paul said, "but you

never know."

His brown eyes gleamed with mischief.

"I've heard rumors the mayor will be in jail," he said. "And I kinda hope

he is.

"That's \$25 -- and the pictures of him would go pretty fast."

**HELP  
SUPPORT  
CHIPPEWA  
PARK**

**A. P. V.  
DOUGLAS  
MACHINE**

**We proudly support**

**CHIPPEWA PARK**

All of us at Century 21 Alex Properties are proud to support our county's newest recreational facility!

Put Number 1 to work for you.

**Century 21**

Alex Properties

© 1987 Century 21 Real Estate Corporation as trustee for the NAE ® and ™ -- trademarks of Century 21 Real Estate Corporation. Equal Housing Opportunity. EACH OFFICE IS INDEPENDENTLY OWNED AND OPERATED.

*A 30 Acre Park Full of  
Fun For All Ages...  
That's Chippewa Park*

Our children & grandchildren along with Jeanine & I have all enjoyed many days of swimming and picnicking at the park.

Let's work together so we can enjoy more fun filled days at the Park.

Frank McFarlane

**Brandon Super Market  
524-2251**

**UTOPIA TOURS**

**MOTOR COACHES  
AVAILABLE FOR ALL  
YOUR CHARTER AND  
TRAVEL NEEDS!**

• **Day Trips**

TWINS, VALLEY FAIR, ETC.

• **Weekend Outings**

• SCHOOL, CHURCH OR GROUP FUNCTIONS

• **Full Tours**

AVAILABLE TO VARIOUS POINTS...  
OZARKS, EAST COAST, NOVA SCOTIA,  
ALASKA, NASHVILLE, CALIFORNIA,  
FLORIDA, ETC.

FOR MORE INFORMATION CONTACT:

**UTOPIA TOURS**

Box 89, Garfield, MN

**612-834-2153**





# A Beneficial Future

## People of county will affect park's future

Chippewa Park, said Donald "Al" Liefkort, will be the only one of the five county parks with a lakeshore.

But the process of turning the 30-acre tract of land into an official county park is a long one, added Liefkort, Douglas County Park Director.

It all started a year ago when the Douglas County Park Board was contacted by the newly formed West Douglas County Park Association, who had members of the board visit the site known as Chippewa Park.

"That's when the park board decided to try for an acquisition grant," said Liefkort. "We wanted to work with a state agency to get a grant to help acquire and build the park. That channel was already in effect because of Spruce Hill and Runestone county parks."

Now, said Liefkort, Chippewa is in the "second stage" of becoming a county park.

The preliminary application for the acquisition grant was approved last October. In its final application, the Douglas County park board will define the park's exact borders and how much it will cost to acquire and develop Chippewa Park.

"The governor will sign the appropriation, and then we're ready to acquire the property," said Liefkort.

The West Douglas County Park

and Historical Development Association, said Liefkort, has pledged to raise half the necessary funds for the park. And they hope to have that money raised by August 1.

"It's a beautiful piece of land," Liefkort nodded. "But to make it a usable park, there will be quite a bit of

work. It's a raw piece of property, so there's a lot of planning involved."

The main improvements to Chippewa Park, the park director stated, would be an access, parking, and the park's natural beach areas.

"There are 30 acres to work with," Liefkort said. "We know we'll have a

beach, probably a fairly big playground. We'll be discussing putting in picnic shelters, tables and possibly grills."

The park board plans to hold "a lot of public meetings," Liefkort added,

**Future. . . Turn to Page 22C**



**CHIPPEWA PARK FROM THE SOUTHWEST:** If the Chippewa Park project is successful and the park is purchased by the county, the property would become the only Douglas County park with lakeshore. The park will take about three years to design, according to county park director Al Liefkort.

**CENEX**  
**CAR CARE CENTER**  
 South Broadway, Alexandria 763-6557  
**WE SUPPORT THE DOUGLAS COUNTY CHIPPEWA PARK.**  
**A Great Place To Play & Picnic!**

**What is Chippewa Park?**  
 A Place For... •Swimming •Fishing  
 •Class reunions •Birds  
 •Picturesque Peace & Quiet  
 •Cross Country Skiing  
 •Chipmunks •Family reunions  
 •Hiking •Picnics •More •More

Your Complete Decorating Center  
**ALEX GLASS & PAINT**  
 763-3344 619 Broadway Alexandria

**Chippewa Park...**

"Let's make it a reality" says Warren Erickson, Manager of Brandon Lumber. Picnicking under the trees while the kids are swimming — how could anyone spend a better day. Thanks to Hillard Nelson for letting us all use this area for the past years.

**Brandon Lumber Co.**  
 524-2287





### Good place to swim

THE NATURAL BEACH at Chippewa Park, nestled between Little Chippewa and Devils lakes, has been a popular swimming spot for decades. Older residents of Douglas County recall hours of fun enjoying the water as this little girl did more recently. Photo by Karen Stensrud

□□□□□□□□□□□□□□□□

*Make your day special...  
Picnic at  
Chippewa Park!*

**J & J  
FURNITURE  
STRIPPING**

BRANDON  
524-2297

□□□□□□□□□□□□□□□□

**Support  
Chippewa  
Park**

**Ron's  
Warehouse**

HWY 27 EAST  
ALEXANDRIA, MN  
763-5555

## Fishing, Swimming, Sunning

*Relax and Enjoy a Day  
at Chippewa Park*



**Washington Federal  
Savings Bank**

613 Broadway, Alexandria, MN 56308 762-1561  
Viking Plaza Shopping Center, Alexandria, MN 56308 762-2314

Safety and dependability since 1901.



*Enjoy the  
beauty of  
Chippewa Park!*

**CUSTOM  
WOODCRAFTS**

— GREG ROERS —

RT. 1, BOX 217  
GARFIELD, MN  
834-2582

See You At...  
Chippewa Park  
Fun Festival  
Sun., June 14



Brandon, MN  
524-2588

● Take Out Orders ● Daily Specials  
HOURS:  
Mon-Sat. 6 am-9 pm  
Sun. 8 am-3 pm



*Come Join the Fun  
and Make  
Chippewa Park  
a Reality*

**Estenson  
Printing**

117 - 5th Ave. W., Alexandria, MN  
(612) 763-3482

**ENJOY  
CHIPPEWA  
PARK**



A CBS AFFILIATE



**KCMT**  
ALEXANDRIA



This souvenir edition is a publication of Alexandria Newspapers, Inc. Stories were written by Karen Stensrud. The newspaper wishes to thank Chris Korkowski of Brandon and all those who contributed material, insights and photographs to make this edition possible.

# Chippewa Park Fun Festival

SUNDAY, JUNE 14, 1987

Help  
Build  
A  
Park

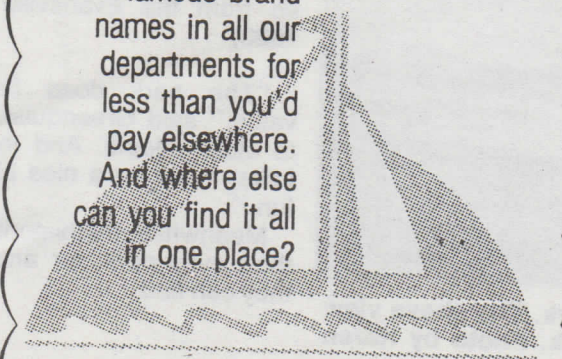


**First Bank  
Alexandria**

Member First Bank System  
Member FDIC  
701 Broadway  
Alexandria, Minnesota 56308  
762-1581

**Herbergers**  
Viking Plaza

Our commitment to quality doesn't cost you more; in fact, you'll find famous brand names in all our departments for less than you'd pay elsewhere. And where else can you find it all in one place?



## Dean's Repair

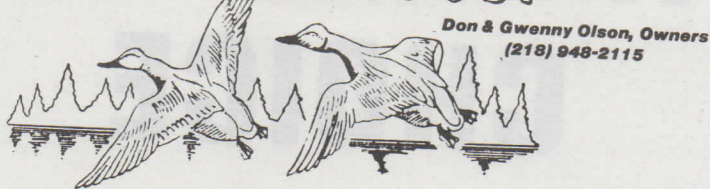
*Wants You  
To Help Support  
Chippewa Park*

**Evansville, MN  
(218)948-2231**

### Going to Chippewa Park?

Stop In & Pick-Up  
Our Delicious "Broasted Chicken"  
For Your Picnic.

THE  
**MELBY OUTPOST**



Don & Gwenny Olson, Owners  
(218) 948-2115

MELBY, MINNESOTA

On Cty. 82 Between Evansville & Ashby

A Great Place for Good Food & Good Times...  
at Affordable Prices!

Featuring...  
The World's Finest Eatin' Chicken

"It's Broasted"



#### DINING MENU

- ¼ CHICKEN BASKET..... \$2.75
- ½ CHICKEN BASKET..... 3.75
- SHRIMP BASKET..... 4.50
- HAMBURGER BASKET..... 2.00

(Also prepared for take-out)

#### BUCKETS TO GO

- 8 PIECES..... \$5.10
- 12 PIECES..... 7.60
- 16 PIECES..... 10.00
- 20 PIECES..... 12.50

Broasted Chicken Hours  
Noon - 11:00 p.m. Saturday & Sunday  
5:00 p.m. - 11:00 p.m. Monday - Friday

GAS-GROCERIES-ICE-BEER  
VCR RENTALS  
3 POOL TABLES & DARTS

FISH & GAME LICENSES  
Lots of room—Over 4,000 sq. ft.

#### HOURS:

8:00 a.m. - 1:00 a.m. Monday - Saturday  
8:00 a.m. - 12:00 p.m. Sunday

Daily 16 oz. Mug Beer Special!

COCKTAILS & BEER SERVED 7 DAYS A WEEK!  
Come & enjoy our wildlife art exhibit!

### NOW OFFERED FOR SALE

**LOCAL BUSINESS** - Established Super Market, excellent location, low dollar investment. Call now for terms, complete info. Join our way of life!!

**3 BR LAKE HOME** on "Big Chip" (NEW LISTING). Perfect East exposure, carpeted, fireplace, low bank, turn key condition. Hurry, see this beauty!

**EXCEPTIONAL RETIREMENT HOME** (JUST LISTED). Super nice, 2 BR, single att. garage, nice yard, walk out basement. Quiet side of town - you'll love this one!

**NEWER LAKE CABIN** - large beautiful lot (2½ acres), low bank, on good fishing lake. Believe it or not, now priced for quick sale - \$22,000. Call now!

**LUXURY COUNTRY PROPERTY**. New fabulously designed 4 BR home, cathedral ceilings in living area, split rock fireplace, solarium, jacuzzi, natural cedar siding, att. double garage and more! On a beautiful 4.6 acre setting with red barn, new steel clad garage/shop and a panorama view of the countryside and Pelican Lake.

**PRICE REDUCED \$5,000.** A beautiful family home, 4 BR w/double att. garage on a double corner lot! Open staircase, formal dining area, and lots of house!

**EXCEPTIONAL COUNTRY HOME**, 3+ BR, fireplace, lower walkout. Extra size dbl. garage on 5 wooded acres. \$58,900.

**PELICAN LAKE HOME**, perfectly maintained, 13 year old 2+ BR, carpeted, finished basement, sgl. garage. \$59,900.

**COUNTRY HOME**, 8 years old, 2+ BR, att. garage, on one acre, in lakes and wooded hill country. \$32,000.

**IN BRANDON**, Remodeled and improved 5 BR, large family room, large lot, price reduced to \$25,000.

**HOBBY FARM**, 4 BR remodeled home, att. garage, barn, new garage/shop. 16 acres of country living! \$38,500.

**40 ACRE/HOBBY FARM**, 10 years old 2 BR home, new garage/shop, barn and other bldgs. Picturesque setting. \$38,000.

**PLUS** many more property listings including: Lake Properties, Residential, Country, Building Lots, Commercial and Farms.

— COMPLETE REAL ESTATE SERVICES —

A MEMBER OF THE  
SEARS FINANCIAL NETWORK

**COLDWELL  
BANKER**

Please Call  
Anytime For  
More  
Information!

CROWN, REALTORS®

Myron Severson

302 Central Ave. No. - Brandon, MN 56315

612-524-2182





# Research

Continued from page 6

-- Chippewa Park, September 19-20 -- Good Music All Day Long -- The Best of Everything in the County Will Be There" (an ad from the Evansville Enterprise, 1923)

"We know generalities," Green-

quist said, "about the early days of the area around Chippewa Park." "The first settlers in the area were in Chippewa Township, which is now Brandon Township," explained the local researcher. "There are some good histories of Chippewa Station,

the predecessor to Brandon. "But things can be changed. You have to be a little skeptical....Everybody wants to be 'first' and 'most' when it comes to history." Greenquist lives just across Little Chippewa Lake from the park. His

grandfather, and early settler in the Evansville area, may have traveled over what is now Greenquist's land to Chippewa Station, which stood just up the hill from Greenquist's home. He may even have traveled through Chippewa Park itself.

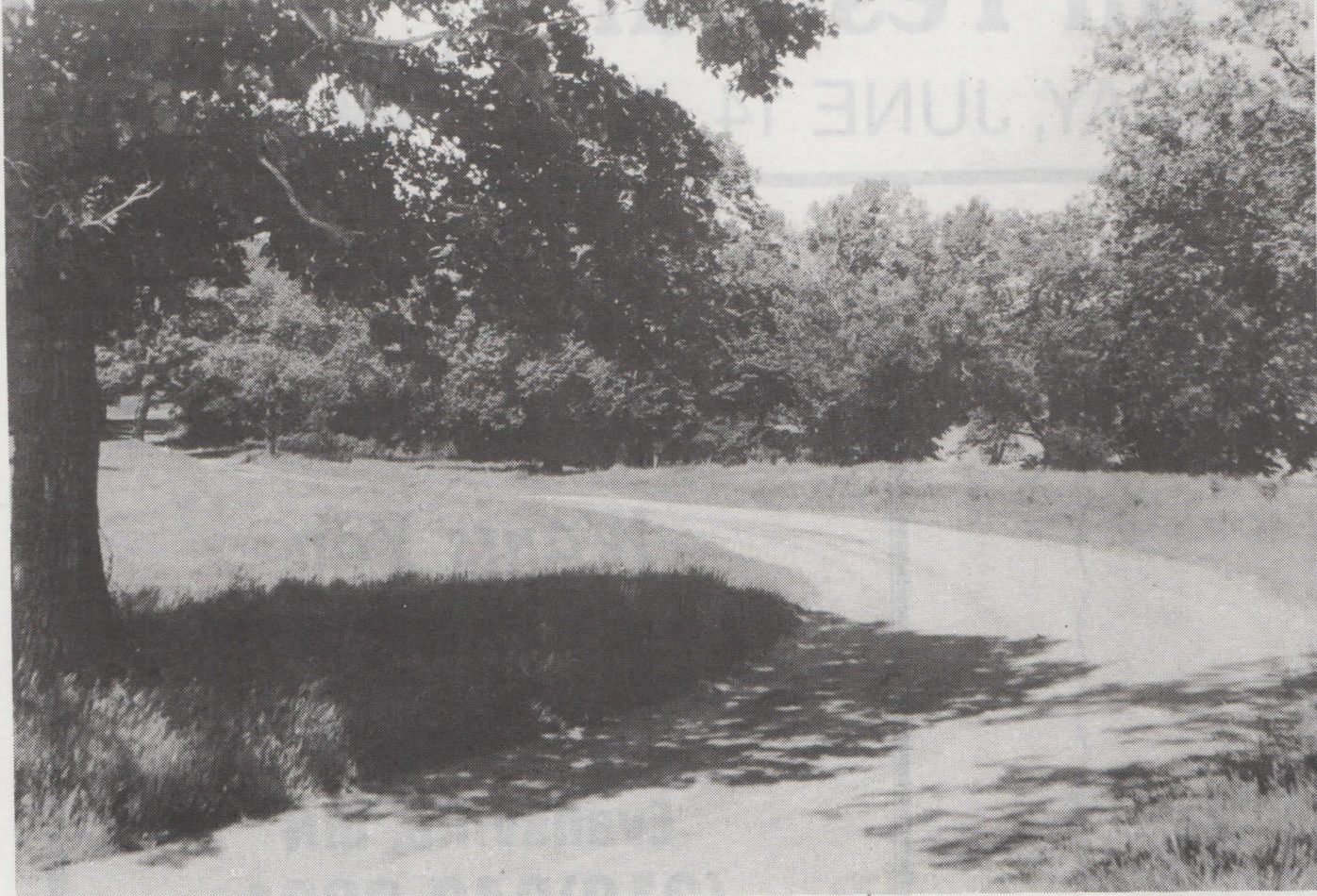
"Hillard Nelson thinks some of the roads led right between the lakes there," said Greenquist. "A lot of people would have come by that way."

Greenquist said he and Anderson still have a long ways to go on their research project. There's a lot more research to be done through the Minnesota Historical Society, and the two hope to interview a number of local residents who recall events and activities at Chippewa Park.

"Fireworks -- Fireworks -- Fireworks -- See the Battle of the Somme in a grand display of fireworks at the Douglas County Community Fair. Also Niagara Falls and many other gorgeous displays of brilliant fire. Without a doubt the greatest display in this county -- Chippewa Park Sept. 19-20 -- You Will Regret It If You Stay Home (an ad from the Evansville Enterprise, 1923)

"The park does have historic value," said Greenquist, "especially to older people. And for the young folks, it will be a nice place to have fun."

Meanwhile, the historians will keep their eyes open for any information they can find.




EARLY SETTLERS may have followed roads leading through what is now called Chippewa Park, according to Bud Greenquist. The settlers would have been on their way to Chippewa Station, just across

Little Chippewa Lake from the park. The above view is looking north towards the park. Photo by Karen Stensrud

  
 Salutes the addition of Chippewa Park to the Douglas County Park Community. Experience Alexandria's Finest House of Elegant Dining!  
 319 Broadway • 763-3999

**Taste**  
**AMERICA'S**  
**CHOICE**  
**Douglas County**



Join the Fun of the "Chippewa Park Fun Festival"

Bob Leslie & the Staff at Brandon Liquors Hope To See You All at the Park On Sunday.

Serving Brandon Since 1948

**Brandon Municipal Liquor Store**  
524-2247





# Pageant

Continued from page 5

andria. "I looked at the picture, and I remembered that hat. It was a sailor hat, with a ribbon that hung down the back. I was ten years old."

Of the "Search for Light," Peterson recalls "a pageant, a choir and an awful lot of people" -- three thousand, to be exact, on the 30-acre tract of land known as Chippewa Park.

There were food stands, put up by the churches, Peterson said.

"I ran with the rest of the gang and played," she chuckled.

Memories of that time are bittersweet for Peterson. Just ten days after the photograph was taken, she was stricken with polio. She has walked since then with the aid of braces and crutches.

"I was (at the park) almost every Sunday in the summer of '24 and '25," Peterson said. "There was a lot going on out there, for so many different groups."

In fact, said Peterson, she tired of the park.

"I wanted to go someplace else," she said. "There were always people there who were feeling sorry for me."

Now, said Peterson, she's happy Chippewa Park -- the site of a child's fun and a child's pain -- may become a county park.

"I was there pretty nearly every Sunday," she recalled proudly. "I sure look forward to them keeping it up."



## Collecting cans

BRANDON'S JUNIOR GIRL SCOUTS will continue to collect cans throughout the summer, with the proceeds going to the Chippewa Park fund. The scouts will also be running a "fish pond" for prizes at the park festival.

## Let's Have a Get Together...

Picnic, Swim  
Sit Back, and Relax

WHERE:  
Chippewa Park,  
of Course!



Carol & Sherry Koep Hope To See You At the Park Sunday

## Carol's Cut 'N Curl

Providing the Latest Style & Techniques to Guarantee Your Satisfaction

524-2236 • Brandon

## See You Sunday at Chippewa Park's Fun Festival

Douglas County's Newest Park Located  
Between Devil's & Little Chippewa Lake

## CUSTOM FLOOR COVERING

Garfield, MN — Phone (612) 834-2264

STORE HOURS: Mon.-Fri. 9:00-5:30

Thurs. 9:00-9:00 • Sat. 10:00-5:00

DU PONT  
ANTRON

...serving travelers  
from Central Minnesota  
for over 30 years...

# BURSCH

## TRAVEL

Alexandria  
112 Lincoln Ave. East  
P.O. Box 877  
Alexandria, MN 56308-0877  
(612) 762-1544

St. Cloud  
2550 W. Division St.  
P.O. Box 670  
St. Cloud, MN 56302-0670  
(612) 251-3180

Granite Falls  
868 Prentice St.  
Granite Falls, MN 56241  
(612) 564-4994

Little Falls  
211 N.E. First Street  
Little Falls, MN 56345-0327  
(612) 632-3634



## Star Electronic Service

411 BROADWAY  
ALEXANDRIA, MINNESOTA 56308  
PHONE: 612-762-1138

### COMPLETE RESIDENTIAL TELEPHONE CENTER

Large Selection of telephone wiring and installing accessories. Installation Available.

### TV ANTENNAS AND CABLE ACCESSORIES

- UHF Amplifiers
- "Do-It-Yourself" Advice
- Equipment Installation
- In-Shop TV Repair



### CB RADIO SALES AND SERVICE SCANNERS, RADAR DETECTORS CABLES, INTERCONNECTS, ADAPTERS

Serving Central Minnesota Since 1971

Hair By.....

# MUGGS & company

cuz you deserve the best!

Check with us for your  
complete hair and  
nail care needs!

Style cuts, colors, highlights,  
perms, nail care and  
a full line of hair and  
nail products.

Nexus, Aveda,  
Sebastian, LaMaur,  
Zotos, etc.

HOURS: Mon.-Fri. 8:30-6 PM;  
Wed.-Thu. till 8 PM; Sat. 8:30-4 PM

1300 Broadway • 762-1832



# Skrove

Continued from page 1

orbit!"

The fair lasted two days, the next year's for three. George and Laura Skrove attended both fairs at Chippewa Park, and they were "there for all the doings," said Laura Skrove.

That's where the speaker enters the story -- an "oldtimer" congressman, Skrove remembered, who was the main speaker at the fair.

That would be the Honorable O.J. Kvale, longtime 7th District congressman, who spoke at the fair of 1924.

George Skrove, once again busy parking cars in the field next to Chippewa Park, didn't recognize the congressman when his car pulled up.

"You can go park up there," said George, pointing to a spot further up the hill.

"But I'm the speaker!" exclaimed

Kvale.

"Oh, well, then you can go park down there," said George, pointing to the park.

Kvale, too, was a highlight of the fairs at Chippewa Park, said Laura Skrove. He kept people talking, she added -- when they weren't talking about Skrove's own prize-winning show of strength.

George Skrove died in February of this year. But Laura Skrove fondly recalls the big events at Chippewa Park in the 1920's.

"To me, those were the good old days, the happy days," nodded Skrove. "Nothing was serious. We were happy-go-lucky."

Happy-go-lucky enough, and strong enough, to have become the talk of the fair as the skinny newlywed who rang the bell and won the cigar.

# Future

Continued from page 17

so that the park can be developed according to the wishes of Douglas County's residents.

"It depends on what they want," Lieffort said. "They'll probably want to be able to have community and individual picnics. And we'll at least talk about camping, boat access and fishing piers."

"I expect this park to take three

years to design before we actually start developing it."

The park director said he didn't know how much more traffic would go through Chippewa Park after it became a county park. Runestone County Park, he said, has an estimated 8,000 visitors each summer.

**FUN IN THE SUN**  
Douglas County

**Chippewa Park**

**JUETTNER**

CHRYSLER Plymouth Dodge Trucks

MOTORS INC.

FORD MERCURY LINCOLN

ALEXANDRIA, MINNESOTA PHONE 763-3126

**A Park With A Personality!!**

We feel Chippewa Park holds a little secret about all of us that have enjoyed many hours of recreation there.

Let's make it a County Park for all to be a part of.

Serving the Western Douglas County Area for 44 Years.

**Enjoy a day at the park!**

**Cheryl's Beauty Shop**

**612-524-2471**

Brandon, MN  
Owner-Cheryl Alstead

**Family Hair Care Center**

**PETERSON Snyder DRUG**

6th & Broadway  
Alexandria, MN 56308  
763-3144

CLIFFORD AND THOMAS PETERSON

Over 80 Years  
"On The Corner"  
Four Generations

★ FREE DELIVERY SERVICE ★

*Alexandria Extrusion Company and its employees support the Chippewa Park Fun Festival!*

*Let's Improve Douglas County ...support*

**Chippewa Park**

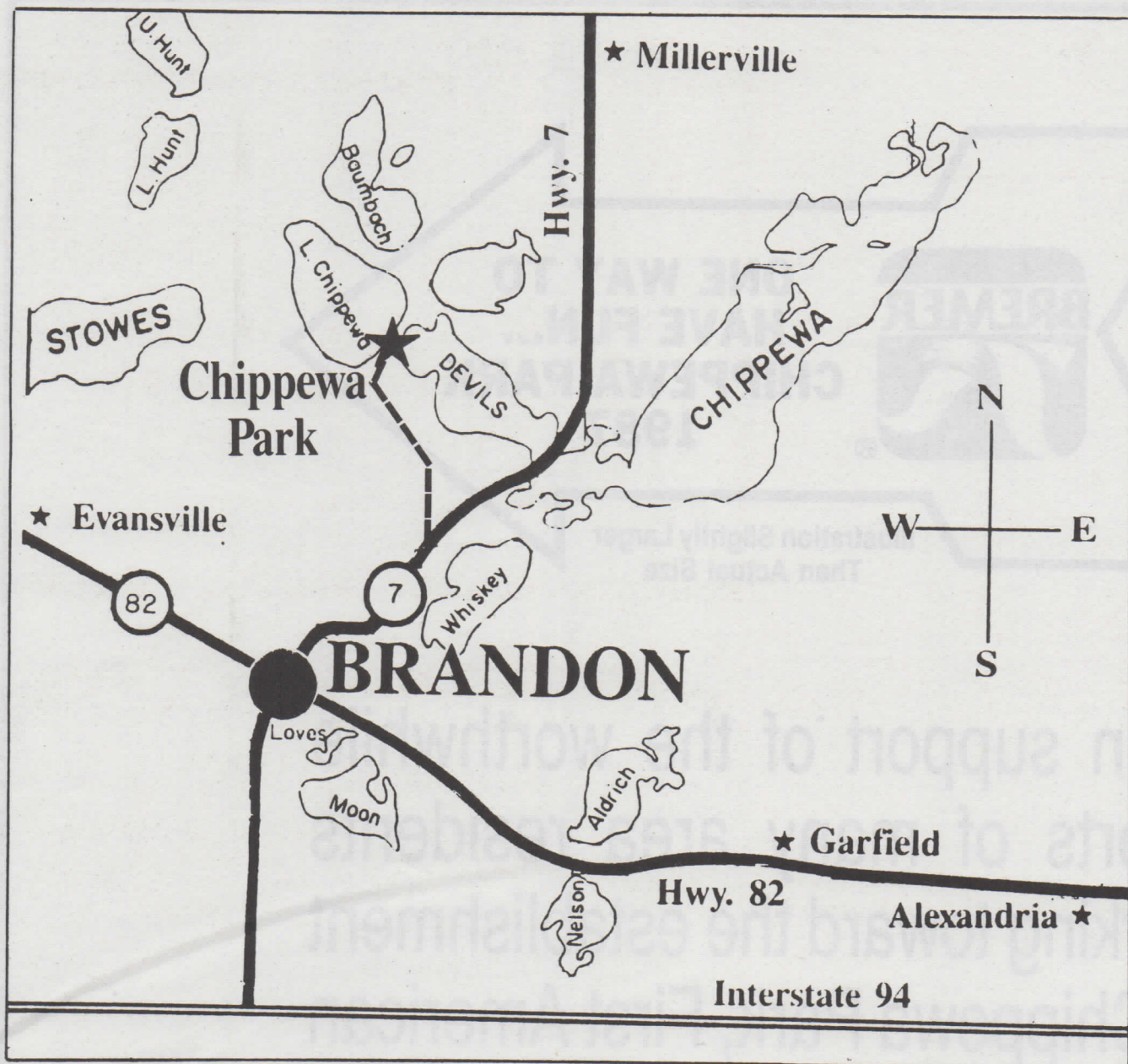
**VIKING FOODS**

**ALEXANDRIA'S LOW PRICE LEADER!**

**NEW SUMMER HOURS:**  
7 AM TO MIDNIGHT MONDAY-SATURDAY  
7 AM TO 7 PM SUNDAY

**310 - 34TH AVE. SOUTH ALEXANDRIA, MN**





## Parking available at park, in town

There will be plenty of parking available for Sunday's Flag Day Fun Festival at Chippewa Park, assure the organizers of the event.

Parking is available in fields adjacent to the park. Handicapped parking will be within the park boundaries.

In addition, those who wish to do so are invited to park at the Brandon School in Brandon. Utopia Tours will provide regular bus service to and from the park to those who wish to park at the school.

## Donations contribute to purchase of Chippewa Park

All proceeds from Sunday's park festival will be contributed to the Chippewa Park purchase fund.

Donations may also be sent to: West Douglas County Park and Historical Development Association, P.O. Box 257, Brandon, MN 56315.

Donations of \$100 or more will be recognized on a plaque to be on permanent display at the park. All donations are tax deductible.

TO GET TO CHIPPEWA PARK, follow County Road 7 north out of Brandon and turn left at Hillard's Way. Watch for signs leading to the park, three miles north of Brandon.

### Enjoy the Day At Chippewa Park with your family



**Remember:**  
For reliable quality film processing have your festival pictures developed with us.

**COLOR RITE PHOTO & VIDEO**  
Kodak Colorwatch System

504 3RD AVE. E., ALEXANDRIA 763-4539

Same Day 1 Hour Service

Home of the Big Ole size print!

### LET US SHOW YOU THE COUNTRY

Leaf Valley	380 acres with hog buildings. . . . \$132,000
Millerville	57 <del>SOLD</del> acres with 160 acres
Evansville	176 acres rented to government
Ashby	180 <del>SOLD</del> with good hunting
Millerville	160 acres Grade A dairy with cattle
Dalton	143 <del>SOLD</del> with farrowing facilities
Battle Lake	48 cow dairy farm. . . . . \$49,900
Elbow Lake	155 <del>SOLD</del> gain farm rented to Government
Evansville	60 cow Grade A parlor set up
Underwood	145 <del>SOLD</del> with irrigation
Pelican Rapids	199 acres with irrigation. . . . . \$85,000
Dalton	100 <del>SOLD</del> of choice duck hunting
Millerville	215 acre dairy farm with good buildings

Century 21 Vista, Inc.

Alan Olson  
Evansville  
218-948-2272

*Let's Help Make  
Douglas County  
the Best  
It Can Be!*

**Ben Franklin**  
Better quality for less

DOWNTOWN ALEXANDRIA

PHONE 763-6619





In support of the worthwhile efforts of many area residents working toward the establishment of Chippewa Park, First American Bank & Trust will give the first 500 Senior Citizens - 55 years of age or older - to arrive at the Park on June 14, a free, arrow-shaped commemorative magnet (illustrated above).

Let's all join forces to make Chippewa Park a reality for today and tomorrow!



**First American Bank & Trust  
of Alexandria-Brandon**

Member Bremer Financial Corporation

Member FDIC