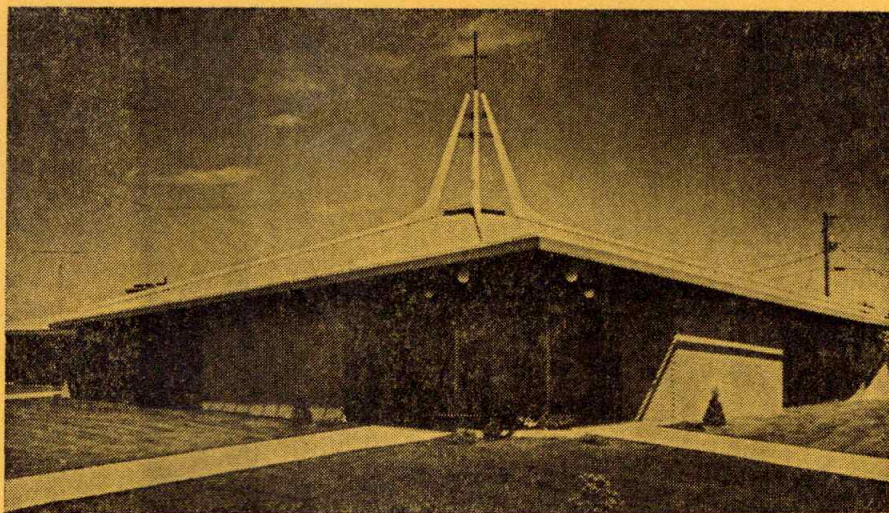


1902

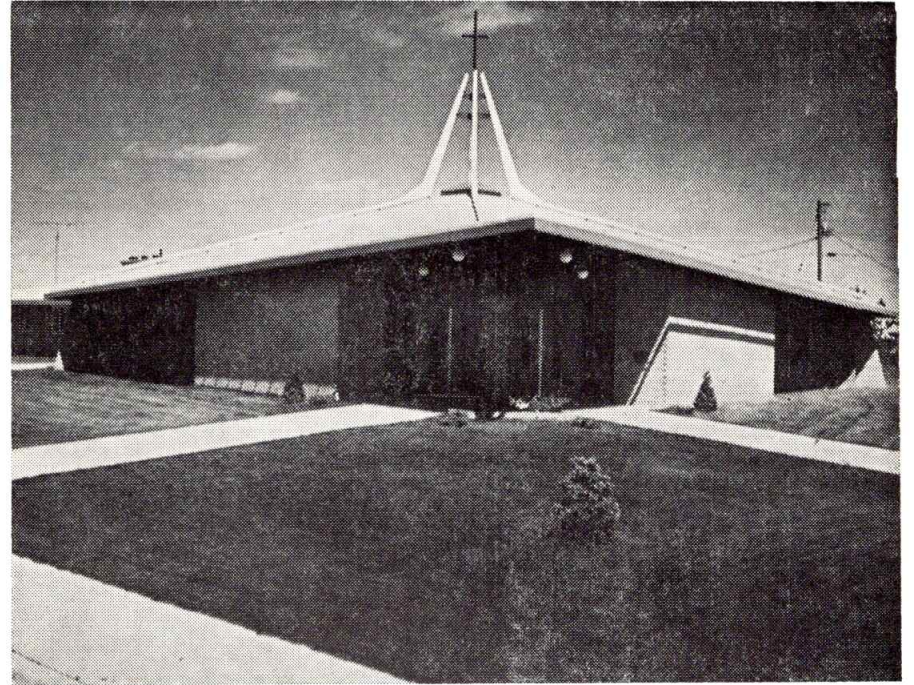
1968



History of St. Ann's Parish

Brandon, Minnesota

Dedication September 29, 1968



Exterior View - 1968

Church of St. Ann

Brandon, Minnesota



Most Reverend Peter W. Bartholome, D.D.

Former Bishop of St. Cloud



Reverend Leon Slominski, Pastor

My dear People of God:

This is truly a day of joy for all of us. It is also a day of thanksgiving to Almighty God for permitting us to build this structure for His honor and glory. It is truly a monument of your faith and your sacrifices.

On this day, when we dedicate this beautiful house of God, let us remember that the success of a parish does not consist in building a church. Its success can be measured only by the honor and glory given to God and the number of souls that are saved. The Church is not a building, it is you, the People of God, Christ-like in your daily living.

May Almighty God bless you and keep you! May St. Ann, our great patroness, intercede for all of us before the throne of God!

Sincerely yours in Christ,

Father Slominski

HISTORICAL BACKGROUND

Dedication

We, the members of St. Ann's parish,
gratefully dedicate this book to
those who preceded us in this parish.

The prayers and sacrifices
of the priests and lay people,
who founded this parish and worked
so hard in the early years,
have brought the blessing
of God upon us today.

May God, in His goodness and love,
continue to bless and guide
the members of this parish
in the years to come!

May our heavenly patroness, St. Ann,
through her kindness and compassion,
continue to intercede for us!

The history of many towns and villages in the early days of the western civilization is similar to the history of Brandon.

In 1859 the old St. Cloud and Fort Abercrombie stage and mail line passed two miles north of the present site of Brandon.

Henry Gager was the first settler in this locality, which was then called Chippewa. The large lake in that vicinity was also given the name of Chippewa Lake.

A hotel, general store, post office, and the usual industries of a frontier village grouped around the settlement.

Roads were built in addition to the stage line, the old military trail and the Red River trail.

Many farms were beginning to be developed in the lake region, which was becoming one of the most desirable points of settlement in the western part of the state.

The future of Brandon was apparently full of promise when the dread event occurred that proved a setback for all of western Minnesota. The courageous and hopeful settlers, who had come here in the period following 1859 and up to the summer of 1862, were forced to flee during the Indian uprising of August, 1862.

A few weeks later the government had the mail route open again. Stockades were put up in Alexandria, Chippewa and Pomme de Terre and soldiers were stationed there for defense. Most of the scattered settlers, after the Indian outbreak, came back during the summer of 1866.

In 1867 came the flood, when the roads, bad enough before, became impassable. Because the nearest place for the settlers to get flour and other provisions was at St. Cloud, these sturdy pioneers were faced with starvation.

Fortunately, an ox-train loaded with supplies for one of the frontier forts

was unable to proceed on the bad roads, so these supplies were sold to the settlers in the vicinity of Chippewa.

In 1868 the township was organized under the name of Chippewa Lake. In August, 1879, when the railroad graded through the town of Chippewa, Engineer Sewell laid out the townsite of the village of Brandon of today, two miles south of the old village on the hill.

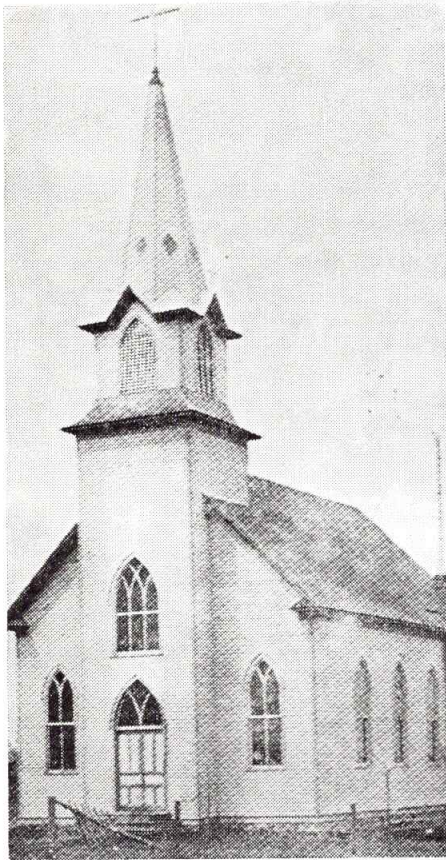
The village of Chippewa was renamed Brandon, in honor of the birthplace in Brandon, Vermont, of Stephen A. Douglas, after whom the county was named.

Martin Stowe immediately built a large store and residence on the then open prairie of the new Brandon. Many other business interests followed rapidly.

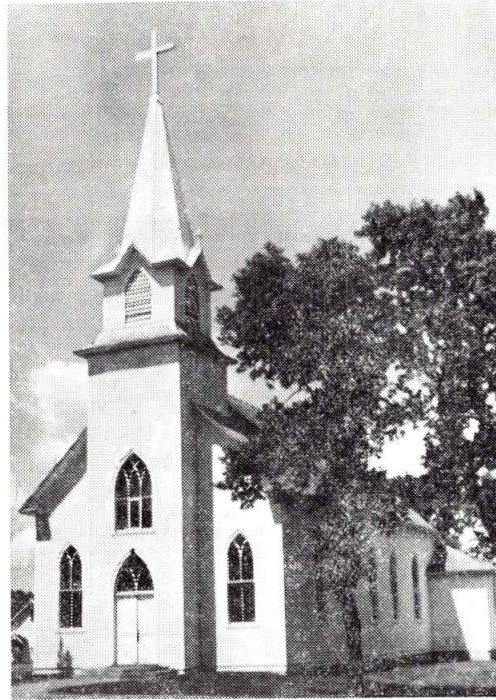
In a few years Brandon boasted of four grain elevators, three saloons, three general merchandise stores, two hotels, two livery barns, two blacksmith shops, two banks, an implement shop, a flour mill, and a population of 225 in 1890.

The village became incorporated by a bill passed by the state legislature and signed by the governor on Nov. 22, 1881.

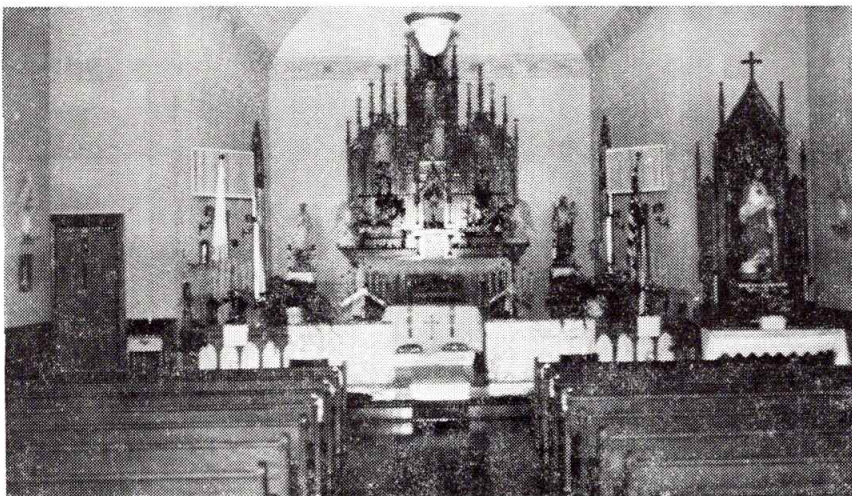
PARISH HISTORY



First Church - 1902



Exterior - 1956



Interior View - 1956

The first Catholic church in Brandon was built in 1902. Before that time the Catholics in this area attended services in Millerville. Because some of the parishioners did not have horses, they asked the Most Reverend Bishop Trobec if they could get permission to build a church in Brandon.

In a letter of November 26, 1901, the Most Rev. James A. Trobec, then Bishop of St. Cloud, wrote to Father Raster, who was pastor of Millerville, as follows: "The people at Brandon have asked me for permission to build a church there, because some of them do not have horses with which to drive to your parish for services. They have subscribed about \$1,200 for a new church. Please help them that they may get something decent without incurring a large debt."

Father Raster not only gave his consent, but selected St. Ann as patron of the new church and assisted the building committee in planning.

In the spring of 1902 a wood frame building was constructed at a cost of \$2,759.90. The new church was adequate for the needs of the 23 families in the parish at that time.

Father James Walcher was the first pastor and August Lehn, Sr., and Jacob Tamble were secretary and treasurer of the newly incorporated parish.

The Catholic Church of St. Ann's of Brandon was incorporated on Feb. 10, 1909, the articles of incorporation were signed by the Most Rev. Trobec, bishop of the diocese of St. Cloud; Rev. Edward J. Nagel, vicar general; Rev. Paul Kuich, pastor in charge; August Lehn, Sr., and Jacob Tamble, two lay members.

In 1915 it became necessary to enlarge and improve the church. The total cost of the new improvement was \$3,136, which included a butternut wood altar, statues, new stations of the cross, and a new furnace.

Some of the first lay trustees who worked hard for the welfare of the parish were: August Lehn, Sr., Jacob Tamble, Thomas Farrell, Michael Kelly and John Ledermann.

The first altar boys in the parish were August Lehn, Jr., of Brandon,

son of the August Lehns, Sr., and Joe Tamble, deceased, son of the Jacob Tambles.

Sister Eulogia (Wagner) was the first parishioner to join a religious order. She celebrated her 50th anniversary as a Benedictine nun in June, 1968.

The first organists for St. Ann's parish were: Mmes. Emily (Seidlinger) Drexler, John Schwartz, John Lehn, Josephine Bitzan and Sister Eulogia (Wagner).

For the past 20 years Mrs. Ray Lanners has been the director and organist for the 18 member choir.

It was not until 1918 that St. Ann's obtained a resident pastor. Previous to this time the parish was taken care of twice a month by the pastors of Alexandria and Osakis.

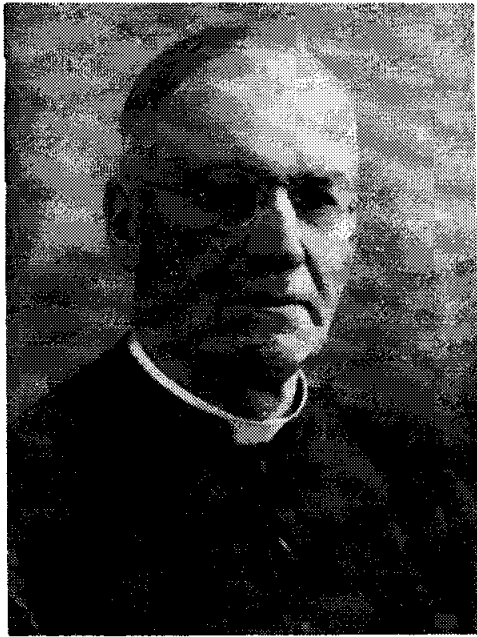
From 1902 to 1918 the following priests were in charge of St. Ann's: Fathers James A. Walcher, 1902-1904; Leo Gans, 1904-October, 1905; Peter Gans, (Father Roger, O.M. Cap.), November, 1905-February, 1908; Fred Hinnenkamp, 1908-1910; Paul Kuich, 1911-1913; William Van Dinter, O.S.C., 1913-1914; Joseph Wessendorf, 1913-1918; Francis Welp, 1914-1918.

In December of 1918 the Most Rev. Joseph F. Busch appointed the Rev. Daniel O'Driscoll as the first resident pastor of St. Ann's. Father O'Driscoll had a room in the Jacob Tamble home. He remained as pastor until May, 1919.

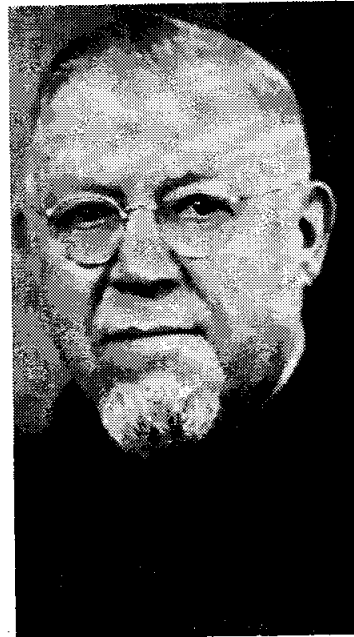
In August of the same year the Rev. William A. Renner was transferred from St. Cloud to St. Ann's. At the time of his appointment the parish did not own a rectory. Father Renner purchased the Theo. Olson home for \$4,500 shortly after his arrival in Brandon. After the necessary repairs had been made this home became the parish rectory until December 1, 1967.

The Rev. Joseph Snyers, O.S.C., succeeded Father Renner as pastor in February, 1922. He remained until July, 1922, when the Rev. John A. Lauer, newly ordained, became pastor of St. Ann's for the next two years.

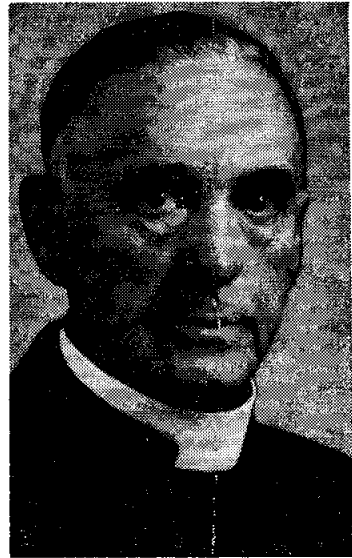
From August, 1924, to September, 1929, the Rev. Austin J. Kinsella was pastor. He was succeeded by the Rev. Frederick P. Rauch, who was pastor



Rev. James A. Walcher
1902 - 1904



Rev. Peter Gans
1905 - 1908



Rev. Fred Hinnenkamp
1908 - 1910



First Rectory

Parish History (continued)

from October, 1929, to January, 1932. Father Rauch redecorated the house and put a much-needed well in the basement of the rectory. In January, 1932, Father Kinsella again returned to Brandon as pastor, which appointment he kept until September 1955.

The following priests from St. Ann's also served as pastors of St. Olaf's parish in Elbow Lake until 1950: Fathers William A. Renner, Joseph Snyers, O.S.C., John A. Lauer, Frederick P. Rauch, and Austin J. Kinsella.

The parishioners of St. Ann's celebrated the Golden Anniversary of their parish in 1952 with their pastor Rev. Austin Kinsella and the Most Rev. Joseph F. Busch, Bishop of St. Cloud.

Rev. Joseph F. Beaulieu was pastor of St. Ann's from 1955 to 1957. Rev. Theo. Peterka served the parish from 1958 to 1965. Rev. Leon Slominski has been pastor since 1965.

There has been a slow but steady growth in the number of parishioners.

At the present time about 90 families or 500 parishioners from the surrounding areas of Garfield, Evansville, and Brandon belong to the parish.

The men and women of the parish are to be commended for their unselfish efforts to promote many projects for the spiritual and financial progress of the parish.

In 1954 Father Austin J. Kinsella, pastor, organized the St. Ann's Men's Club. The men of the parish meet once a month to stimulate individuals to become better family members, more active parishioners and more informed and alert Christians. The present officers are: President, Dennis Korkowski; Vice President, Frank McFarlane; Secretary, Bernie Thoennes; and Treasurer, Mike Wettstein.

The St. Ann's Confraternity of Christian Mothers was organized on the 26th of July, 1913, with Rev. Paul A. Kuich as director and chaplain.

The Confraternity of Christian Mothers was reorganized in 1959 by Rev. Theo. Peterka, pastor. It now incorporates the Ladies Guild and the parish Council of Catholic Women. This organization meets once a month to encourage individual spiritual de-

velopment, to strengthen lay assistance to the pastor, to participate in organized programs of study, and to work for the betterment of the parish.

The present officers are: President, Mrs. Elroy Wibstad; Vice President, Mrs. John Smith, Sr.; Secretary, Mrs. James Klimek; and Treasurer, Mrs. Al Schecker, Sr.

The senior members of the Christian Mothers were honored at a reception on February 7, 1968. The honored guests were: Mmes. Rose Brennan (a charter member), Josephine Bitzan, Ben Byrne, Frances DeBilzan, Louis Kassube, Mary Klimek, Henry Laners, Pete Lehn, Charles Moriority, Lena Schwartz, Ann Slominski and Bill Webb.

Plans for St. Ann's second Catholic church and rectory in Brandon were drawn up in 1966.

The members of the building committee who assisted Father Slominski in the planning included: Donald Bitzan, Ray Bruns, Ernest Carlson, Francis Fuller, Jack Korkowski, Jerome Ledermann, Larry Mahan, Al Wagner and Michael Webb.

The architects were Seifert and Staszko Associates of Alexandria. The bids were in and the contract was awarded by May 1, 1967. Construction began the first week in May by the general contractors, Carlson Construction Company of Evansville.

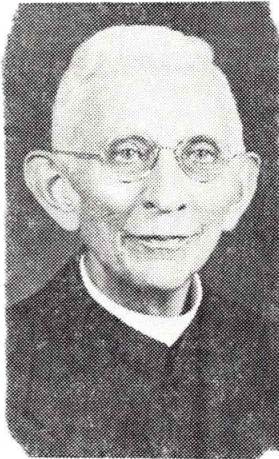
The new church is built mostly of split-face red granite, with a little brick to match the rectory. It will seat 325 people. The front entrance to the church is in the southwest corner and the altar is in the northeast corner. The baptismal font is in the vestibule. The church basement is complete with a kitchen, meeting room and lavatories. The rectory basement will be used for religion classes.

The first Mass in the new church was celebrated on Christmas Eve, 1967.

The Most Rev. George H. Speltz, D.D., Bishop of St. Cloud, will preside at the laying of the cornerstone, blessing of the church and consecration of the altar on September 29, 1968 at 3:00 p.m.



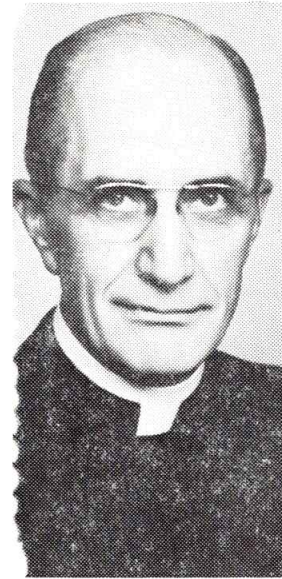
Rev. Paul A. Kuich
1911 - 1913



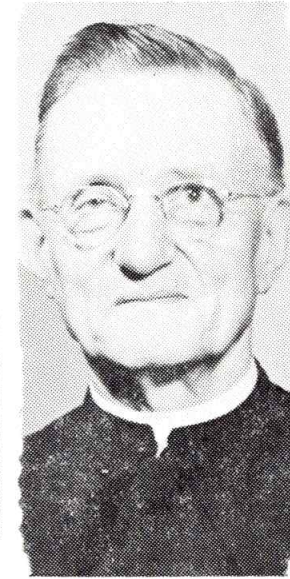
Rev. Joseph Wessendorf
1913 - 1918



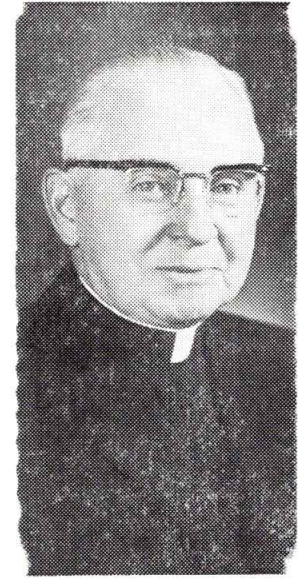
Rev. Wm. VanDinter, OSC
1913 - 1914



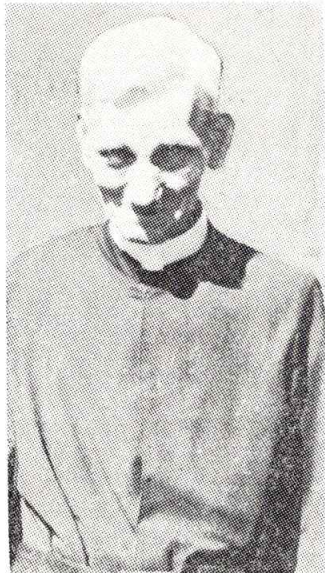
Rev. William Renner
1919 - 1922



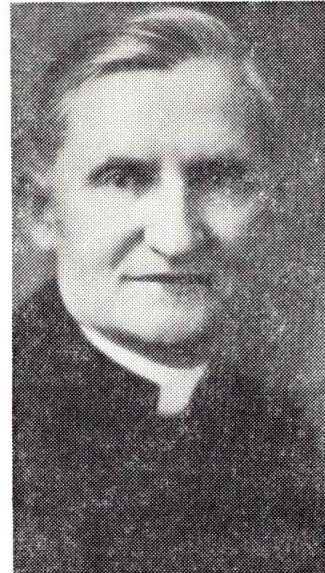
Rev. Joseph Snyers
1922 - 1922



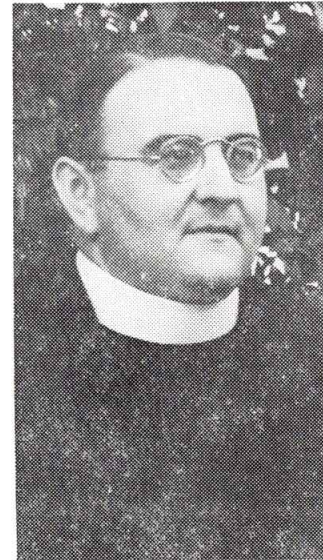
Rev. Austin Kinsella
1924 - 1955



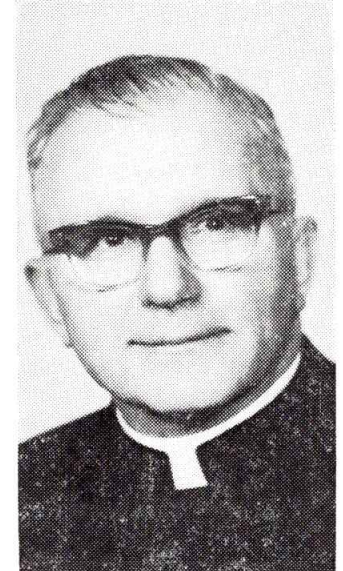
Rev. Francis Welp
1914 - 1918



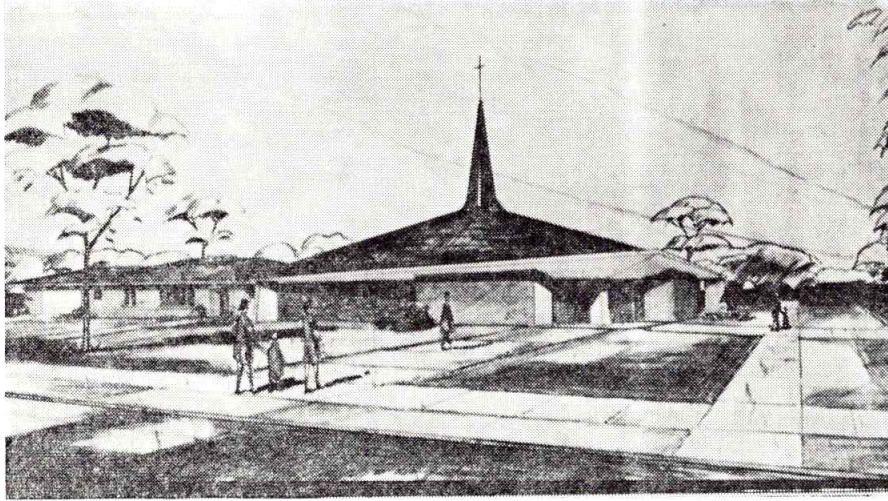
Rev. Daniel O'Driscoll
1918 - 1919



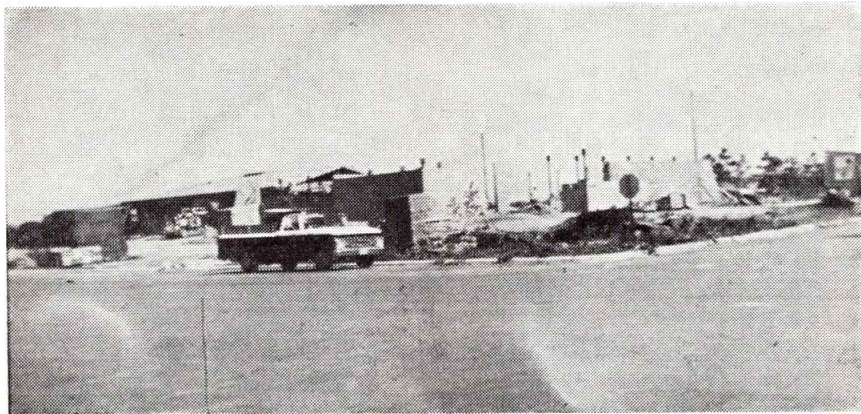
Rev. Frederick Rauch
1929 - 1932



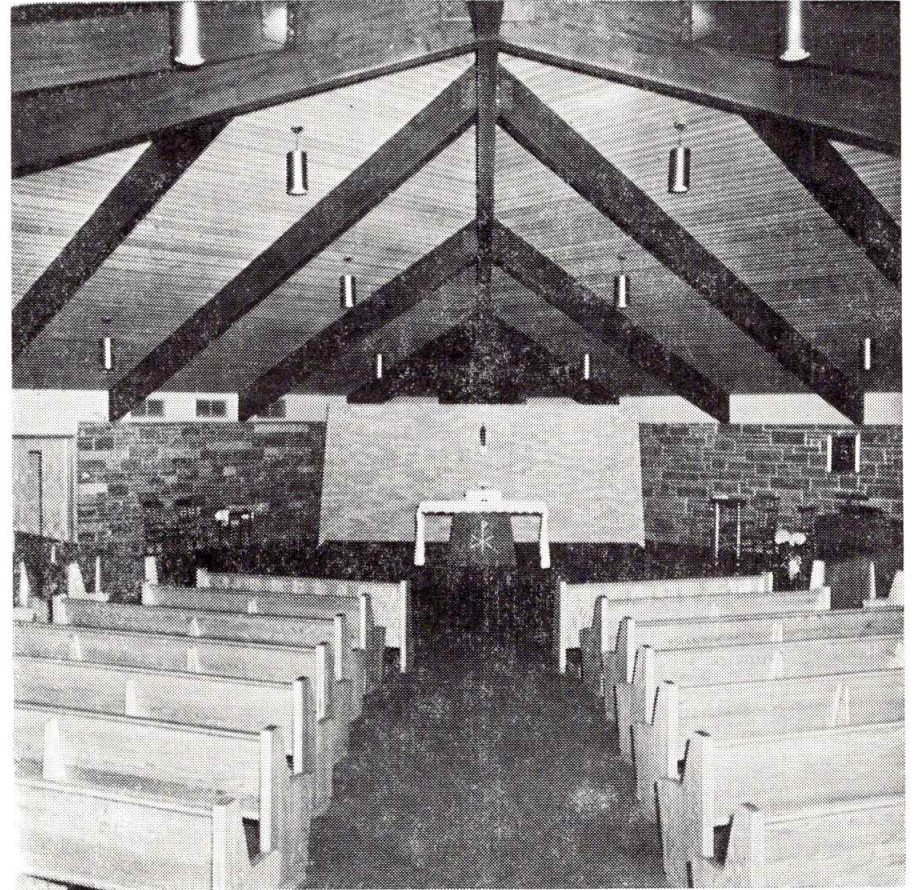
Rev. Theo. Peterka
1958 - 1965



Architect's sketch of the second church of St. Ann - 1967



Construction of St. Ann's church and rectory



Interior view of the new St. Ann's Church - 1968

STATISTICS

Pastors

Rev. James A. Walcher	1902-1904
Rev. Leo Gans	1904-1905
Rev. Peter Gans, (Father Roger, O.M.Cap.)	1905-1908
Rev. Fred Hinnenkamp	1908-1910
Rev. Paul A. Kuich	1911-1913
Rev. Joseph Wessendorf	1913-1918
Rev. William Van Dinter, O.S.C.	1913-1914
Rev. Francis Welp	1914-1918
Rev. Daniel O'Driscoll	1918-1919
Rev. William A. Renner	1919-1922
Rev. Joseph Snyers, O.S.C.	1922-1922
Rev. John A. Lauer	1922-1924
Rev. Austin J. Kinsella	1924-1929
Rev. Frederick P. Rauch	1929-1932
Rev. Austin J. Kinsella	1932-1955
Rev. Joseph F. Beaulieu	1955-1957
Rev. Theo. Peterka	1958-1965
Rev. Leon Slominski	1965-

First Baptism

Willie Hentges - son of the Clement Hentges

First Marriage

Sarah Fitzpatrick and Sam Doren

First Funeral

Marie Kleindel (1903)

STATISTICS

Vocations to Priesthood

Rev. Adrian Ledermann

Rev. Jerome W. Kelly

Vocations to Sisterhood

Sisters of St. Benedict

Sister Eulogia (Wagner)

Sister Agnesia (Wagner)

Sister Mary Rhonda (Suchy)

Sisters of St. Francis

Sister Beata (Lorsung)

Sister Kathleen (Kelly)

Sister Mary Eve (Goering)

Present Parish Organizations

St. Ann's Men's Club and Parish Council of Catholic Men

St. Ann's Confraternity of Christian Mothers and Parish Council
of Catholic Women

St. Ann's Choir

Five Mission Circles:

St. Clare, St. John, St. Jude, St. Olaf, St. Patrick

Parish Trustees

Donald Bitzan, Secretary

Michael Webb, Treasurer

Bibliography

1. "History of Douglas County, Minnesota," by Constant Larson
(Vols. I and II - 1916 Edition)
2. The St. Cloud Register
(1939 Edition)
3. Parish Records and friends

We are indebted to Mrs. Stan Kaess for her many hours of
research and compilation in preparing the materials for this book.

Congratulations

TO THE PARISHIONERS OF
ST. ANN'S PARISH
ON THEIR FINE NEW CHURCH

We are proud to have been the General Contractors on this fine new church in Brandon.

CARLSON CONSTRUCTION CO.

General Contractors
Equipment Rental

Phone 948-6033

Evansville, Minn.

Congratulations

TO THE PARISHIONERS OF
ST. ANN'S PARISH
ON THEIR FINE NEW CHURCH

We are honored to have been the Electrical Contractors on this fine new structure.

NELSON ELECTRIC SERVICE, INC.

Levi and Rudy Nelson

"If You Have a Short . . . It Won't Be Long!"

Industrial - House - Commercial - Farm - Contracting

Phone 763-5279

Alexandria, Minn.

Congratulations

HERMANSON FLOOR COVERING

SALES and SERVICE

Carpet — Linoleum — Tile — Ceramic Tile — Formica

Draperies — Rods

Free Estimates

Phone 524-3155

Brandon, Minn.

Congratulations

HOFFMAN PLBG. AND HTG.

Oscar Lindgren, Owner

Hoffman, Minn. 56339

